



Archway Road, N6

£950,000

A substantial three bedroom duplex apartment approaching 1,300 sq ft with an impressive kitchen reception room opening to a private courtyard garden.

Conveniently placed for access to local transport and shopping there is easy access to Highgate Woods, Parkland Walk along with Highgate Village, Crouch End and Archway.

Features

- Three Bedrooms
- Three Bathrooms
- Open Plan Kitchen
- Reception Room
- Secure Garden
- Off-Street Parking



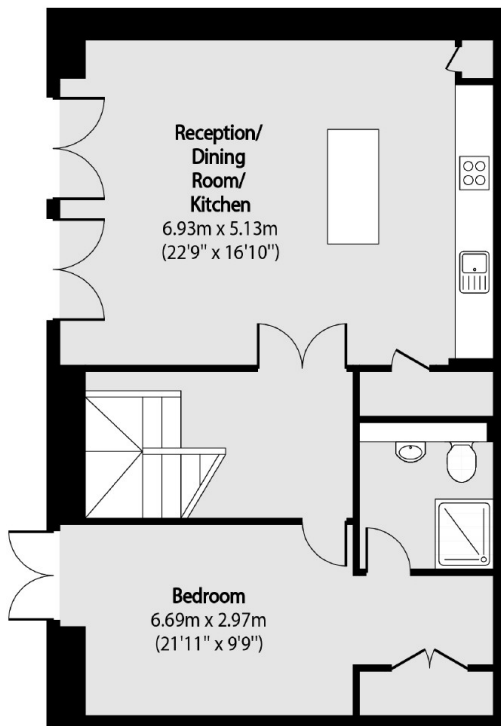
Archway Road, N6

This beautifully presented apartment is ready to move in and has two bedrooms each with their own bathroom on the entrance level.

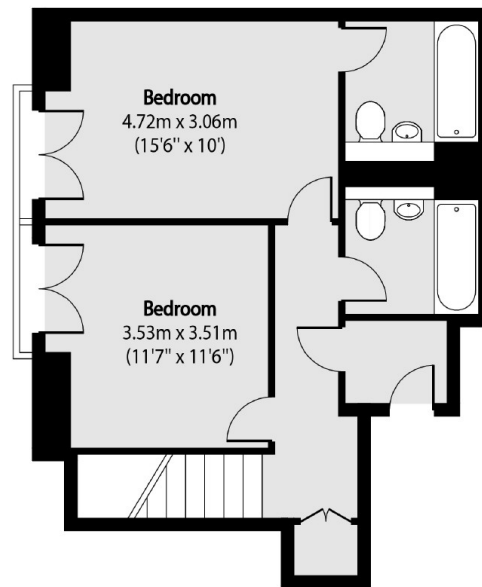
The garden floor has a superb open plan kitchen and reception room with an additional TV room/ bedroom with en suite. The garden level opens onto a private courtyard garden and is ideal for entertainment.



Archway Road, London, N6



Lower Ground Floor



Ground Floor

Total area (approx): 119.51 sq m (1286 sq. ft)