



## Archway Road, N6

£975,000

A substantial three bedroom duplex apartment approaching 1,286 sq ft with an impressive kitchen reception room opening to a private courtyard garden.

Conveniently placed for access to local transport and shopping there is easy access to Highgate Woods, Parkland Walk along with Highgate Village, Crouch End and Archway.

### Features

- Three Bedrooms
- Three Bathrooms
- Open Plan Kitchen
- Reception Room
- Courtyard Garden
- Off-Street Parking



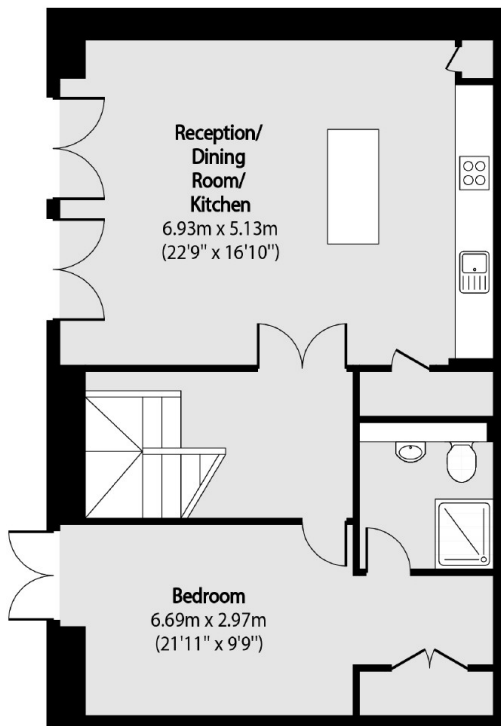
## Archway Road, N6

This beautifully presented apartment is ready to move in and has two bedrooms each with their own bathroom on the entrance level.

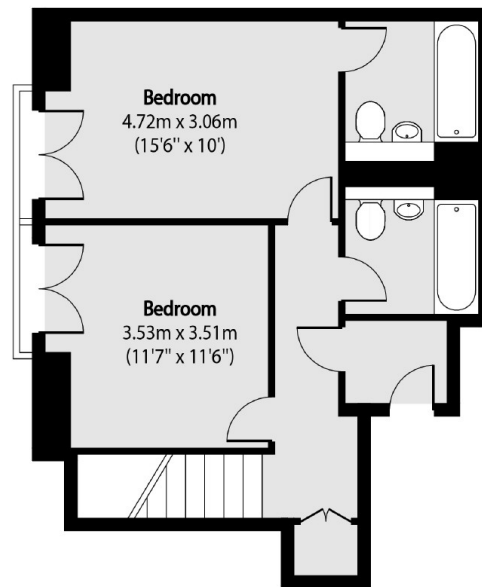
The garden floor has a superb open plan kitchen and reception room with an additional TV room/ bedroom with en suite. The garden level opens onto a private courtyard garden and is ideal for entertainment.



# Archway Road, London, N6



Lower Ground Floor



Ground Floor

Total area (approx): 119.51 sq m (1286 sq. ft)