



Hornsey Lane, N6

£285,000

A well presented one bedroom apartment with a reception room open plan to a modern fitted kitchen and two balconies with views over the communal gardens. Leaseholders must be over 60.

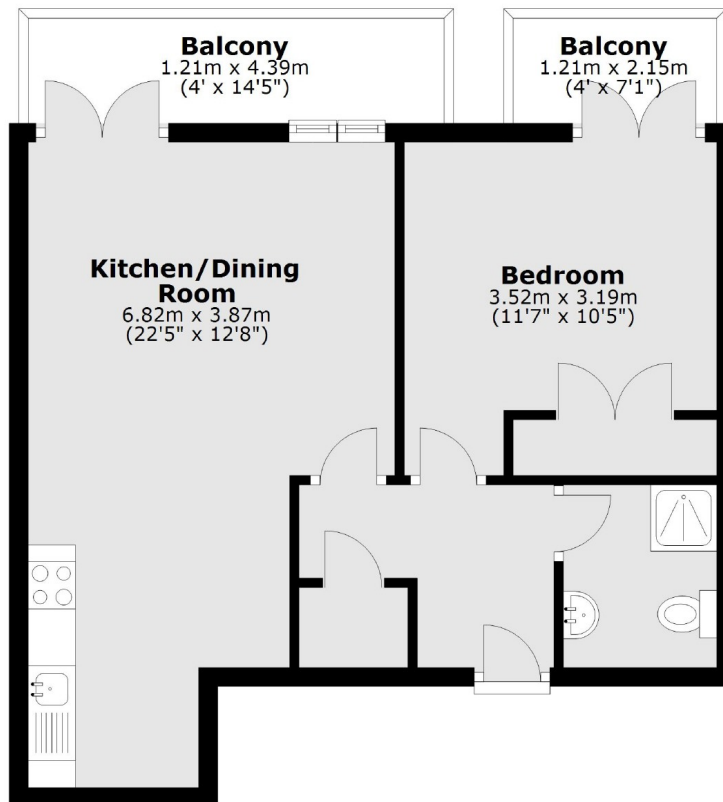
Fitzwarren House is located close to local shopping amenities, cafés, restaurants and the green spaces of Waterlow Park. The development has a house manager, 24-hour emergency assistance and use of communal lounge area.

Features

- Over 60's Development
- Open Plan Kitchen/Reception
- Shower Room
- Two Balconies
- Lift Access
- Communal Gardens

Hornsey Lane, London, N6

Upper Ground Floor



Main area: Approx. 42.6 sq. metres (458.7 sq. feet)
Plus balconies, approx. 7.9 sq. metres (85.2 sq. feet)