



## Cholmeley Park, N6

£1,100,000

A three bedroom, two bathroom apartment in a discreet small modern purpose built block in the heart of Highgate Village, with a good size private garden and terrace.

Well positioned close to the charming Waterlow Park, the amenities of the village and approximately half a mile to Highgate and Archway underground stations together with the local transport.

### Features

- Three Bedrooms
- Two Bathrooms
- Modern Kitchen
- Reception Room
- Private Garden
- Underground Parking





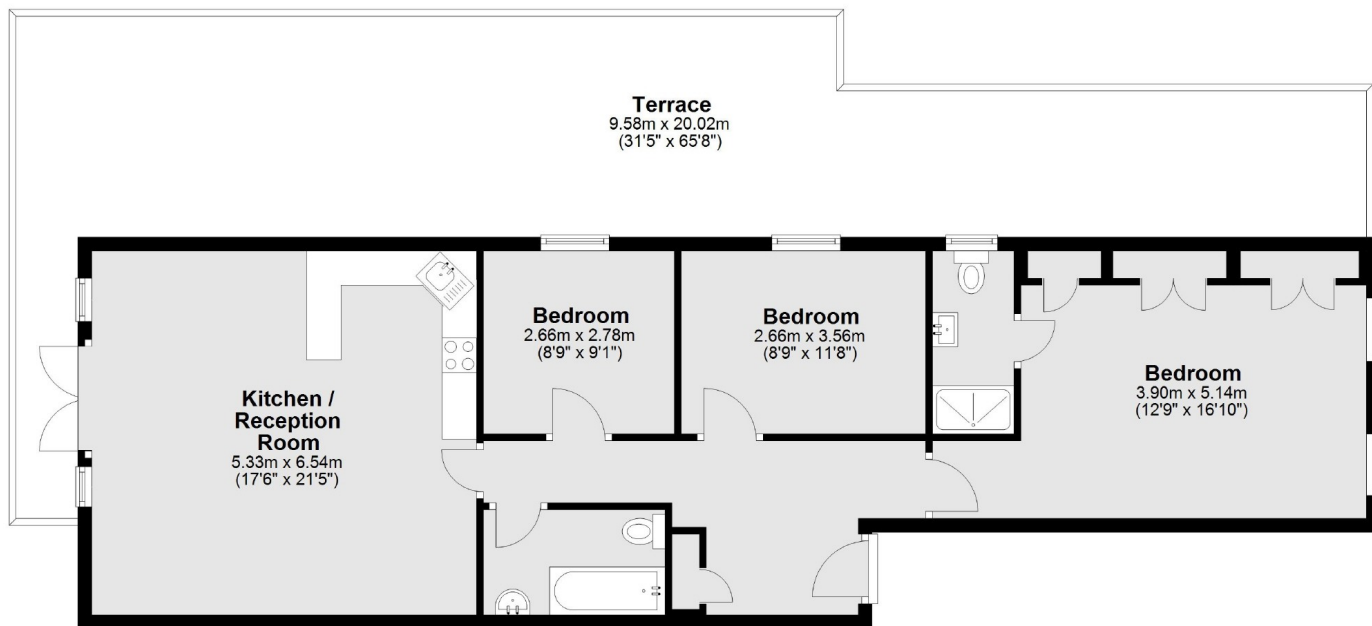
## Cholmeley Park, N6

This delightful apartment has wooden flooring and features open plan living with direct access to its own garden area and the added advantage of a secure underground parking space.





# Cholmeley Park, London, N6



Main area: Approx. 88.1 sq. metres (948.4 sq. feet)  
Plus terrace, approx. 60.8 sq. metres (654.4 sq. feet)