



Hampstead Lane, N6

£1,100,000

An impressive raised ground floor apartment converted from a handsome Victorian property with generous high ceilinged rooms and a small parking space.

Located just 0.2 miles to the village amenities and transport connections the property is less than half a mile to the vast open spaces of Hampstead Heath.

Features

- Three Bedrooms
- Two Bathrooms
- Large Reception Room
- Kitchen
- Patio Garden
- Small Parking Space



Hampstead Lane, N6

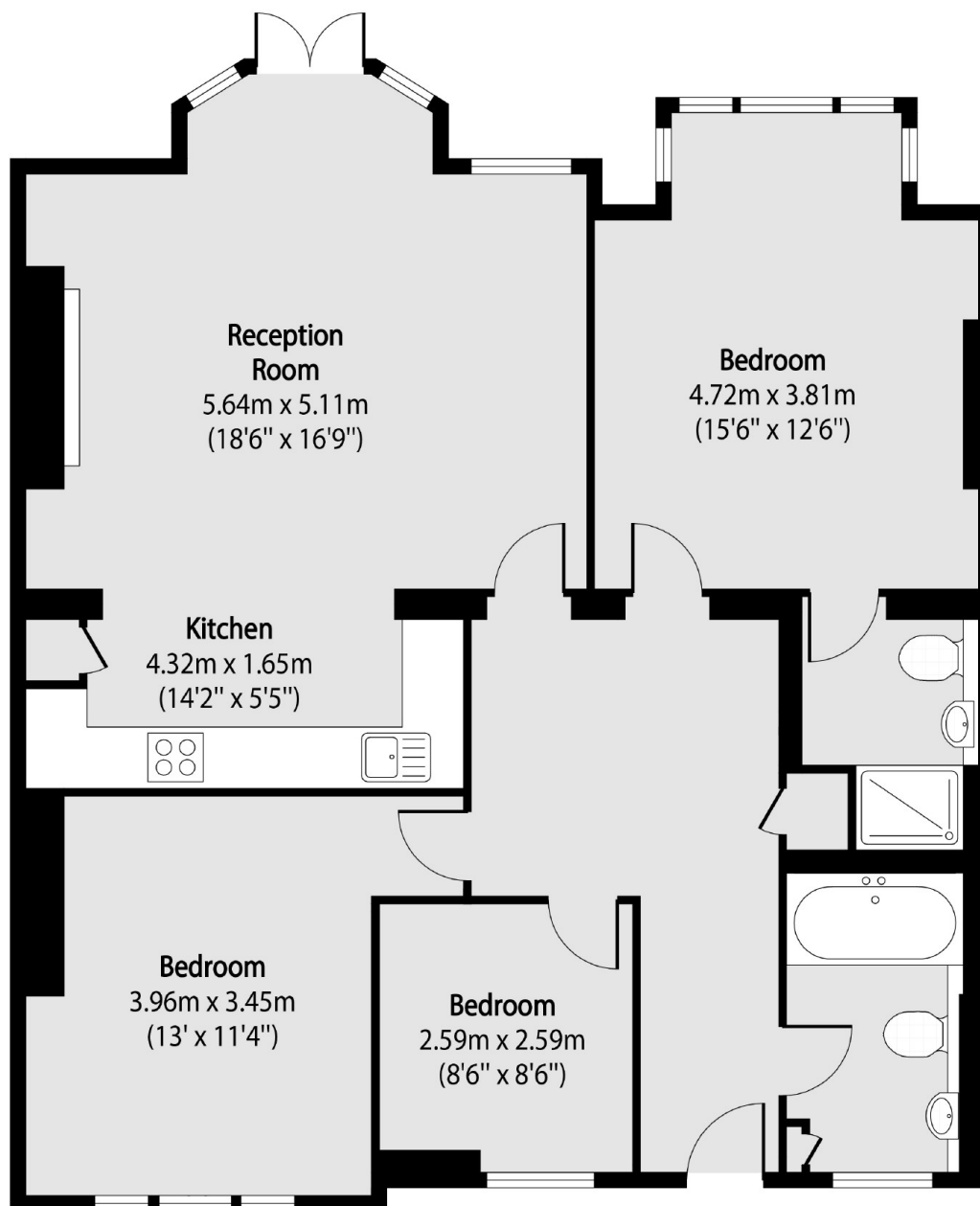
Approached via a spacious entrance hallway there is a large reception room with period fireplace, detailed cornicing, access to the patio garden and a smart modern kitchen.

There are two well proportioned double bedrooms, one with an en suite and further study or third bedroom along with a family bathroom.

Set back from the road behind a wide driveway, flats of this nature are rare to the market and should be viewed at the earliest opportunity.



Hampstead Lane, London, N6



Total area (approx): 96.62 sq m (1040 sq. ft)