



Highgate High Street, N6

£450,000

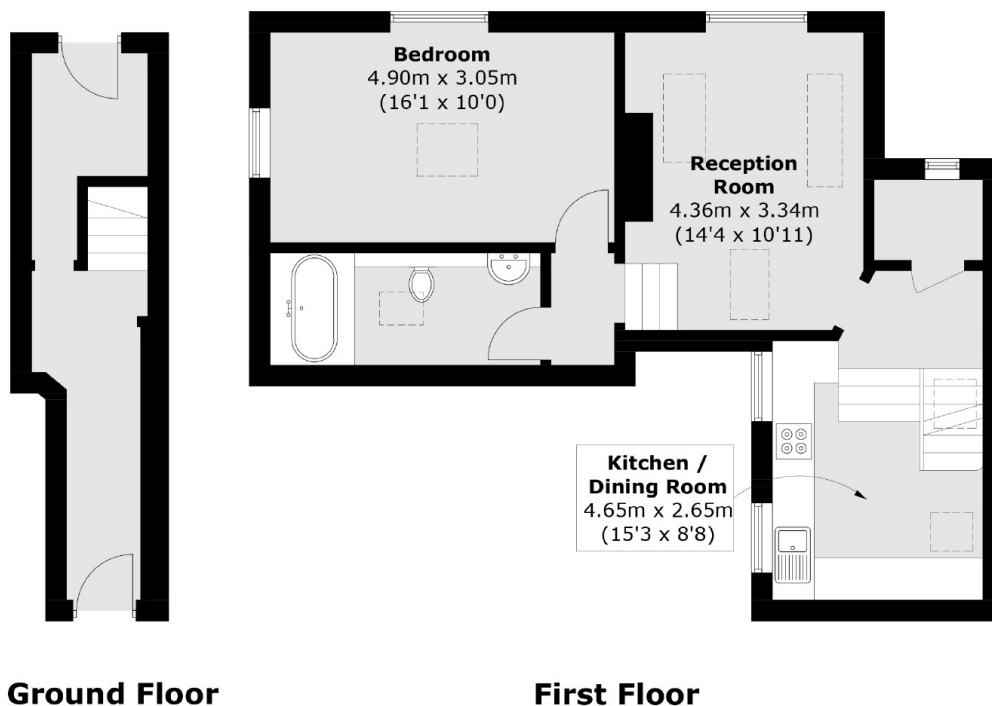
A charming one bedroom apartment with a spacious reception room with high pitched ceiling on the first floor of a Grade II Listed Georgian property in the very heart of the village.

The property is perfectly placed amongst the shops, restaurants and café society, just a short walk to the open acres of Waterlow Park and close to transport connections.

Features

- Double Bedroom
- Reception Room
- Kitchen
- Bathroom
- Split Level
- Village Location

Highgate High Street, London, N6



Total area (approx.): 65.1 sq. m (700.7 sq. ft)