



## Cromwell Avenue, N6

£2,600 Per calendar month

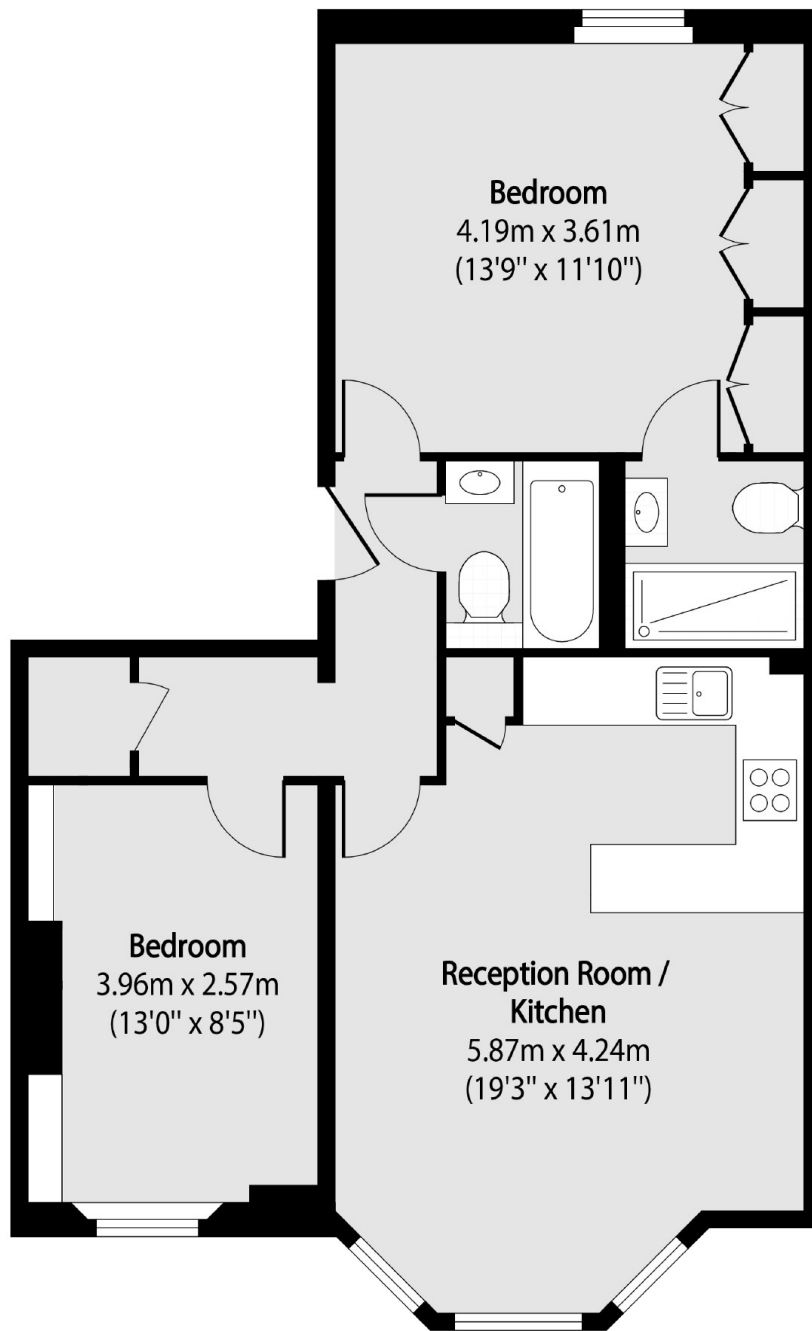
A two double bedroom, two bathroom apartment on the first floor of a converted Victorian house, located in a popular tree-lined residential street in Highgate.

Cromwell Avenue is conveniently situated for access to Highgate Village and Archway Road. Highgate underground station and Parkland Walk are also within easy reach.

### Features

First Floor  
Two Double Bedrooms  
Two Bathrooms  
Open Plan  
Wood Floor Throughout  
Great Location

Cromwell Avenue,  
London, N6



Total area (approx): 59.27 sq m (638 sq. ft)