



North Hill, N6

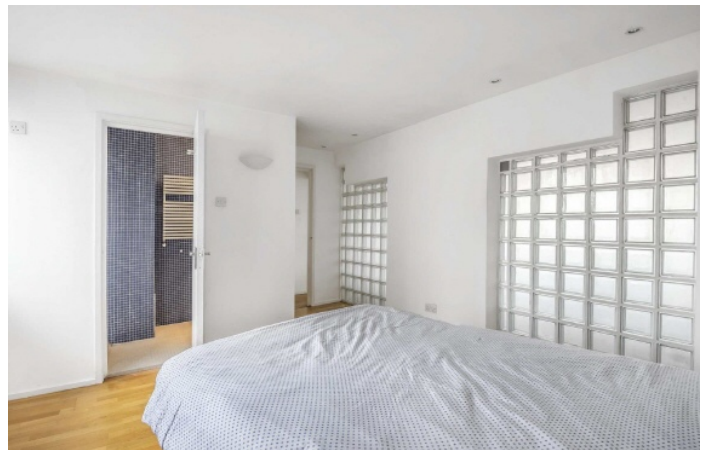
£925,000

In this iconic landmark Grade I Listed building designed by Berthold Lubetkin and just moments from the village, a three bedroom apartment on the ground floor.

Highpoint is a short walk to Highgate Northern Line underground station, Waterlow Park, Hampstead Heath, shopping amenities of Highgate Village and local schools.

Features

- Three Bedrooms
- Two Bathrooms
- Reception Room
- Kitchen
- Communal Facilities
- Balcony



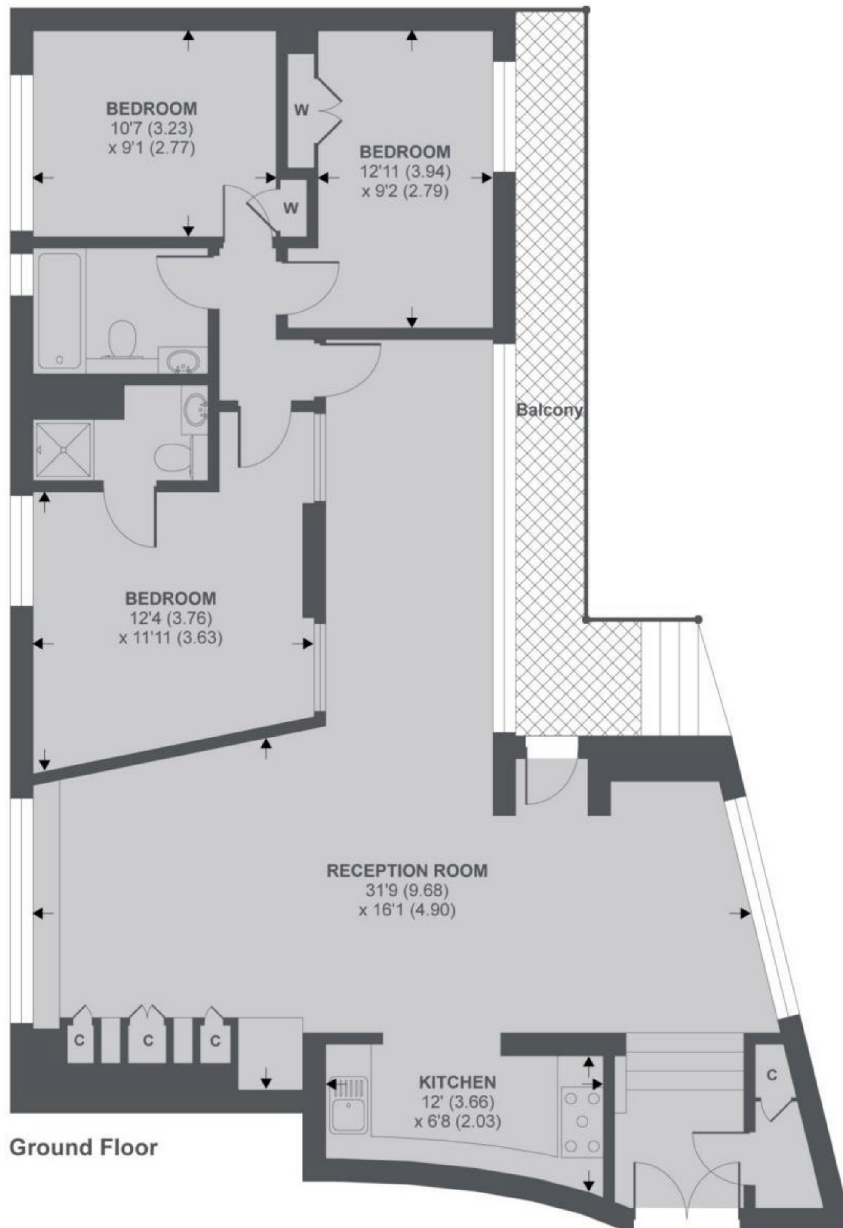
North Hill, N6

High Point, possibly one of the finest examples of residential Modernist architecture in London has extensive communal facilities including stunning gardens, tennis courts, heated swimming pool and on site caretaker.

This unique property is understood to have been created from the original 'Tea Rooms' and provides nearly 1200 sq ft of accommodation.



North Hill, London, N6



High Point N6

APPROX FLOOR AREA 1171 SQ.FT 108.8 SQ.M

Copyright nichecom.co.uk 2019 REF : 424672

Dexters

Highgate
35A Highgate High Street
London
N6 5JT
Sales
020 8545 8584

Energy Rating: E. We aim to make our particulars both accurate and reliable. However they are not guaranteed; nor do they form part of an offer or contract. If you require clarification on any points then please contact us, especially if you're traveling some distance to view. Please note that appliances and heating systems have not been tested and therefore no warranties can be given as to their good working order.

 **RICS** | Regulated
Estate Agent
and Letting Agent

dexters.co.uk