



Cholmeley Park, N6

£890,000

A well presented upper floor apartment in this highly sought after and respected Art Deco style block which has outstanding far reaching views from the communal roof terrace.

Cholmeley Lodge is perfectly placed moments from the village amenities, restaurants and coffee shops, opposite the open spaces of Waterlow Park and close to local schools.

Features

- Two Double Bedrooms
- Reception Room
- Shower Room
- New Kitchen
- Communal Roof Terrace
- Garage



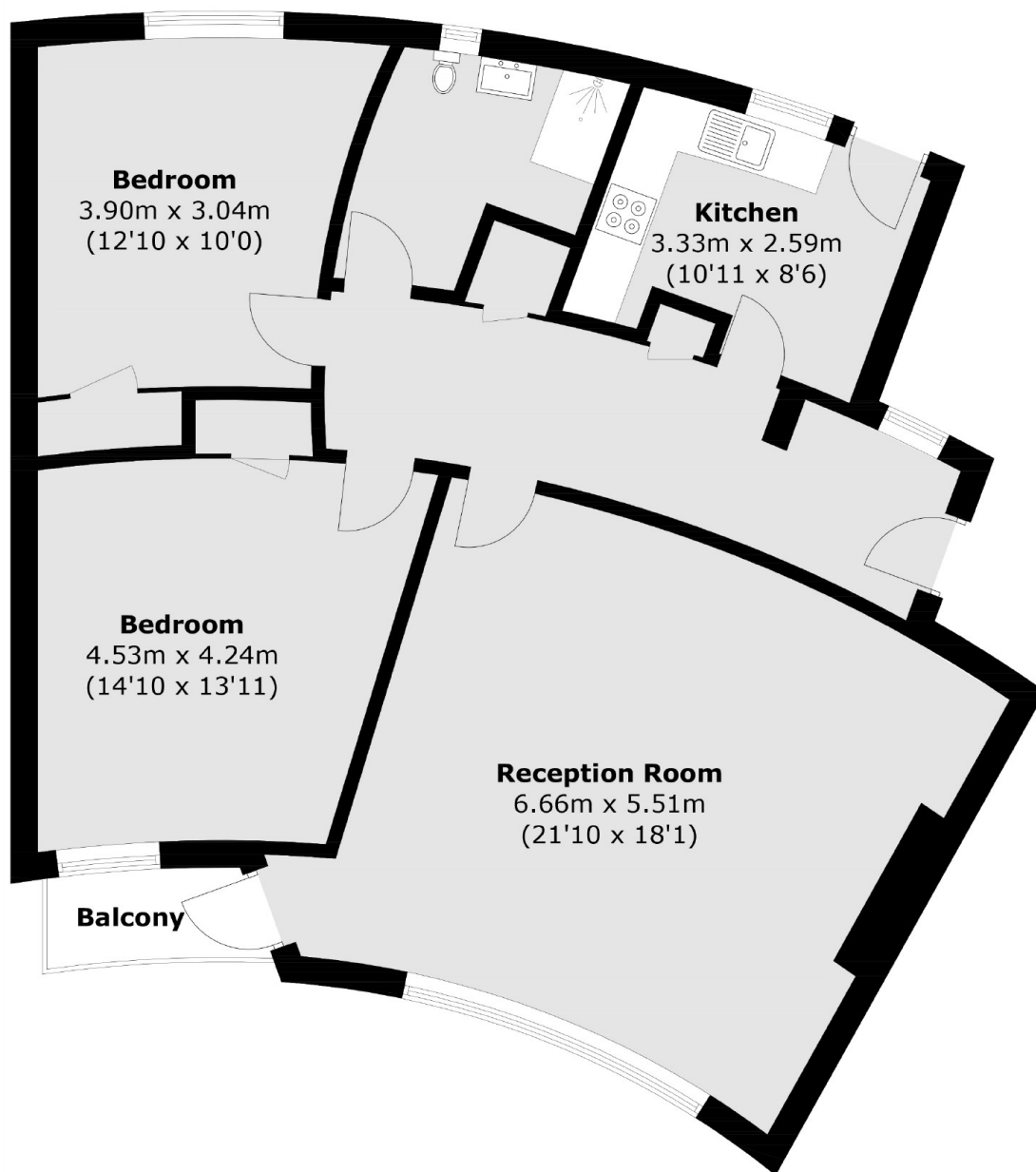
Cholmeley Park, N6

Designed by the architect Guy Morgan, this Grade II Listed building has been described as one of the finest surviving 1930s mansion blocks.

The building has porterage, lift access, communal hot water and heating, well presented common areas and a communal roof terrace with impressive views over the London skyline.



Cholmeley Park, London, N6



Total area (approx.): 97.9 sq. m (1,053.8 sq. ft)
Balcony area : 2.3 sq. m (24.7 sq. ft)