



Lyttelton Road, N2

£1,750,000

Dexters



Lyttelton Road, N2

Situated between The Bishops Avenue and Winnington Road, an outstanding five bedroom semi-detached house with a distinctive green pantile roof and a large rear garden with southerly aspect.

This delightful home has a wide frontage and provides spacious accommodation including a welcoming entrance hall, guest WC, three reception rooms, kitchen diner and has several entry points to the garden.

On the upper floors are five generous bedrooms, a family bathroom, shower room and good storage with potential to rearrange the layout.

Externally there is good off-street parking, a garage and a large level rear garden which is ideal for entertaining.

Conveniently located close to the local shopping at Market Place, schools and places of worship. East Finchley underground station (Northern Line) is less than half a mile away as well as good bus links.

Features

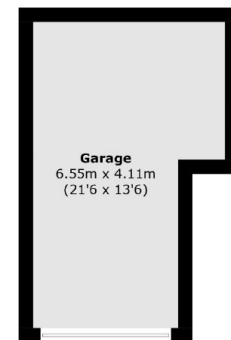
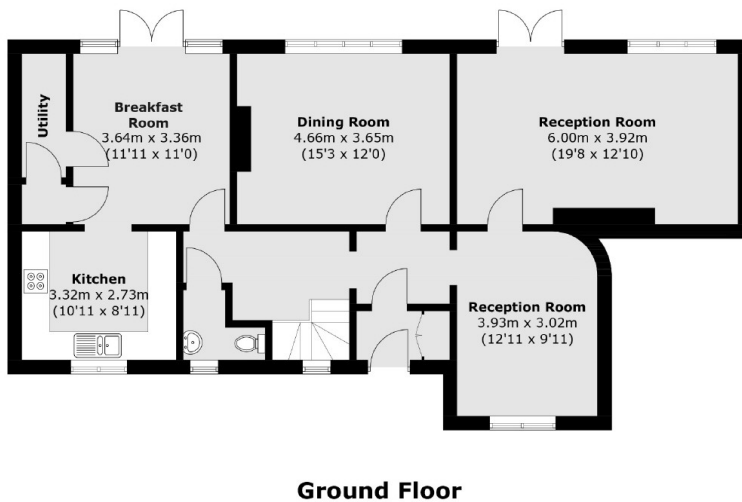
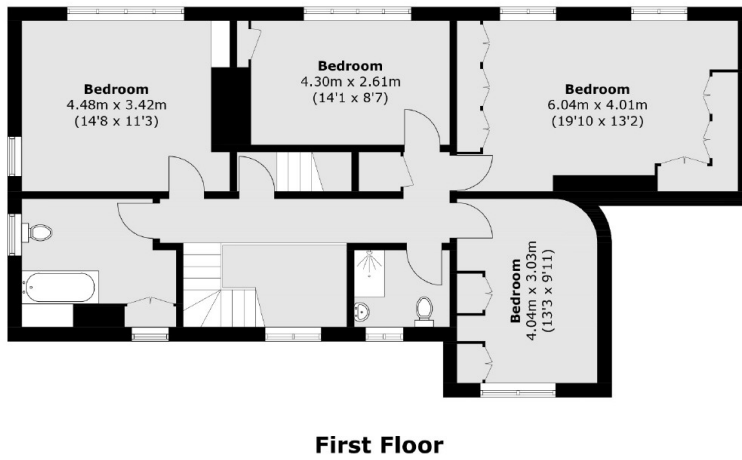
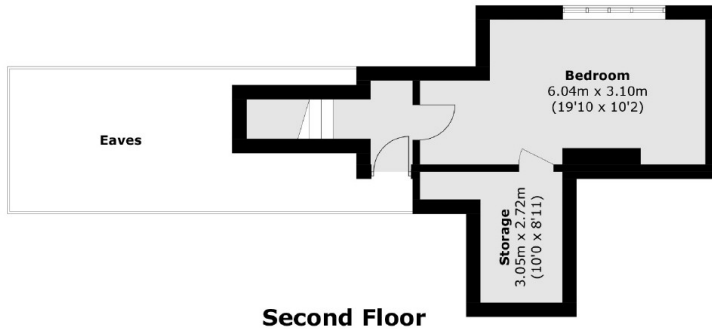
- Five Bedrooms
- Kitchen Breakfast Room
- Three Reception Rooms
- Garage
- South Facing Garden
- Available Chain Free







Lyttelton Road, London, N2



(Not Shown In Actual
Location / Orientation)

Total area (approx.): 217.5 sq. m (2,341.1 sq. ft)
Garage: 23.2 sq. m (249.7 sq. ft)
(Excluding Eaves)