



Talbot Road, N6

£525,000

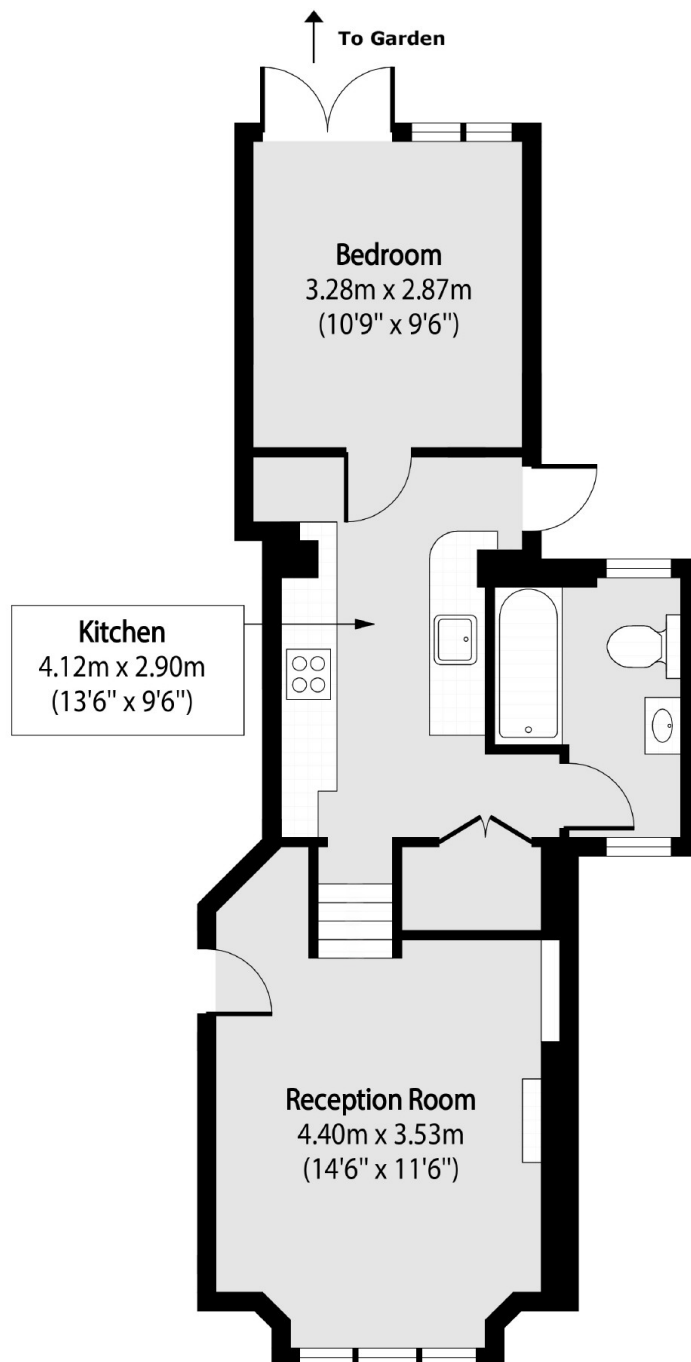
A spacious and well presented split level apartment, within an attractive late-Victorian converted property with direct access to a delightful private rear garden.

The property is located in a sought-after residential turning, only a short distance from the amenities of the village, Highgate underground station, Highgate & Queen's Woods.

Features

- Reception Room
- Double Bedroom
- Bathroom
- Kitchen
- Private Garden
- Residents Parking Zone

Talbot Road, London, N6



Total area (approx): 43.90 sq m (473 sq. ft)