



Stanhope Road, N6

£1,150,000

An impressive garden flat converted from a handsome Edwardian house that features a smart modern kitchen open to a spacious reception with glazed doors to the private patio and communal garden beyond.

Stanhope Road is well positioned for access to Highgate tube station and between the vast amenities of both Highgate Village and Crouch End Broadway.

Features

- Three Bedrooms
- Two Bathrooms
- Open Plan Kitchen
- Reception Room
- Additional Storage
- Off-Street Parking

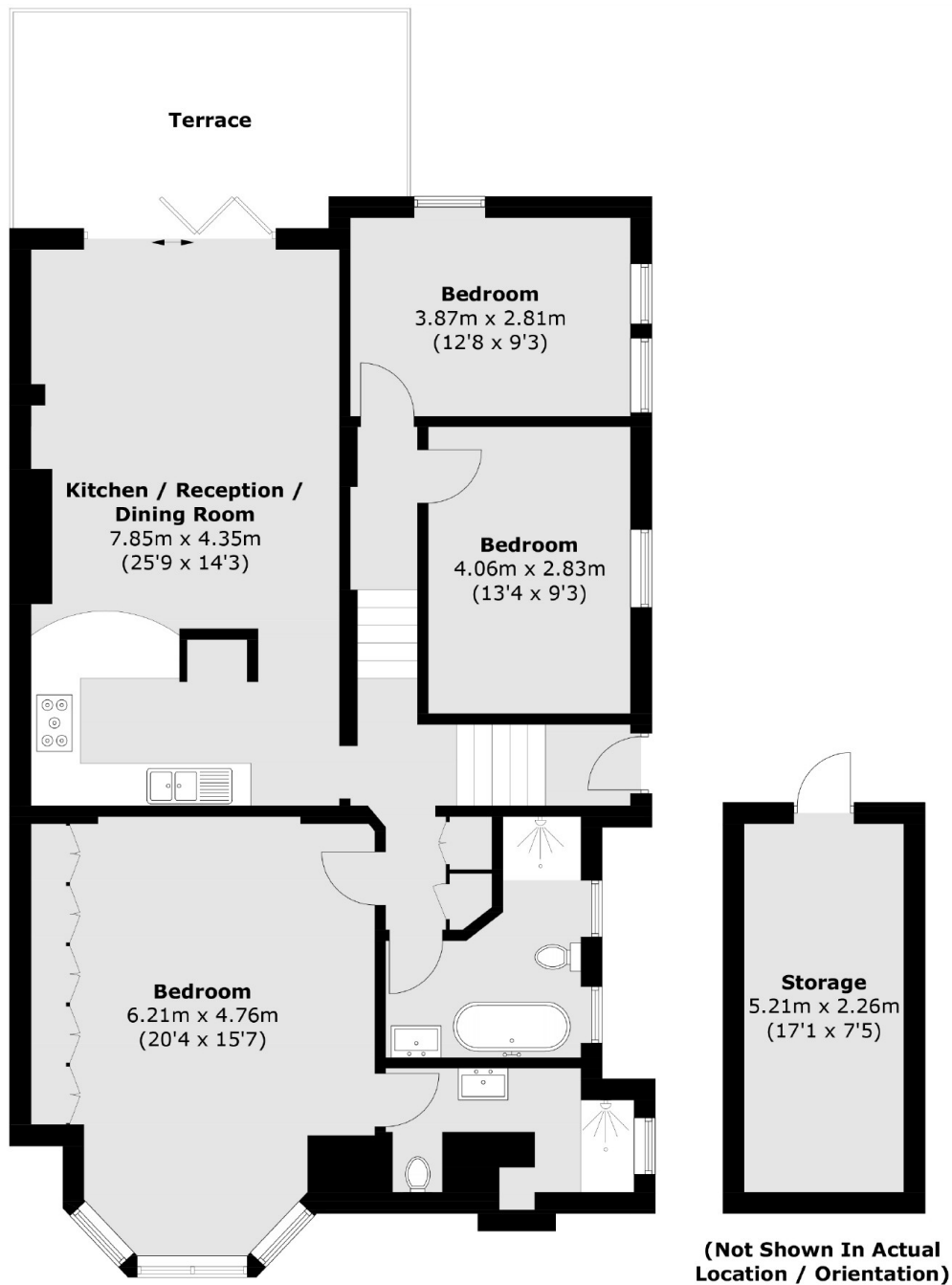


Stanhope Road, N6

This well presented apartment has generous proportions and approximately 1,200 sq ft of accommodation with a secluded private patio and an extensive communal garden.



Stanhope Road, London, N6



Total area (approx.): 111.9 sq. m (1,204.5 sq. ft)
Storage (approx.): 11.8 sq. m (127.0 sq. ft)
Terrace: 16.4 sq. m (176.5 sq. ft)