



## Sheldon Avenue, N6

£2,650 Per calendar month

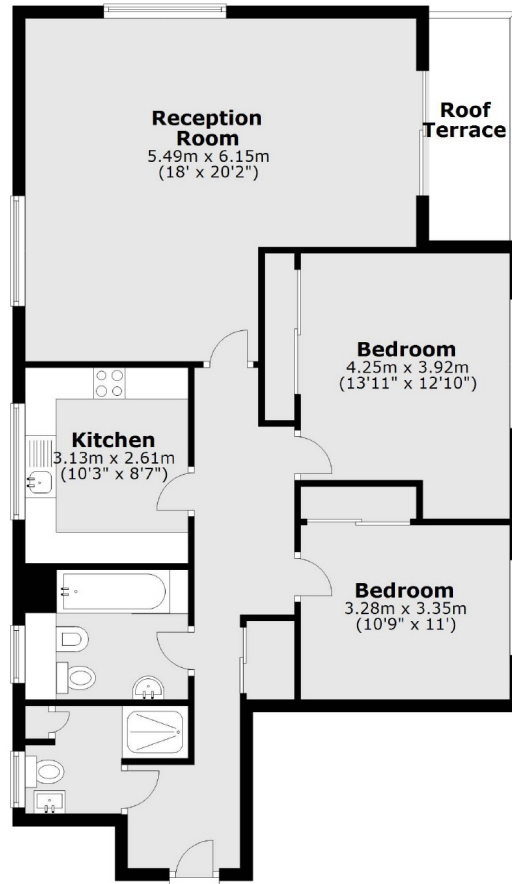
A spacious two bedroom, two bathroom apartment in a private development. The property is generously proportioned with a modern separate kitchen and a large reception room, both with underfloor heating throughout.

Ideally located for the many renowned schools in Highgate and Muswell Hill with Kenwood and Highgate Woods also near by. Easy access to the A406 and A1.

### Features

- Two Double Bedrooms
- Two Bathrooms
- Lift Access
- Balcony
- Gated Development
- Portered

Sheldon Avenue,  
London, N6



Main area: Approx. 86.9 sq. metres (935.3 sq. feet)  
Plus roof terrace, approx. 5.1 sq. metres (55.0 sq. feet)