



## Highgate High Street, N6

£600,000

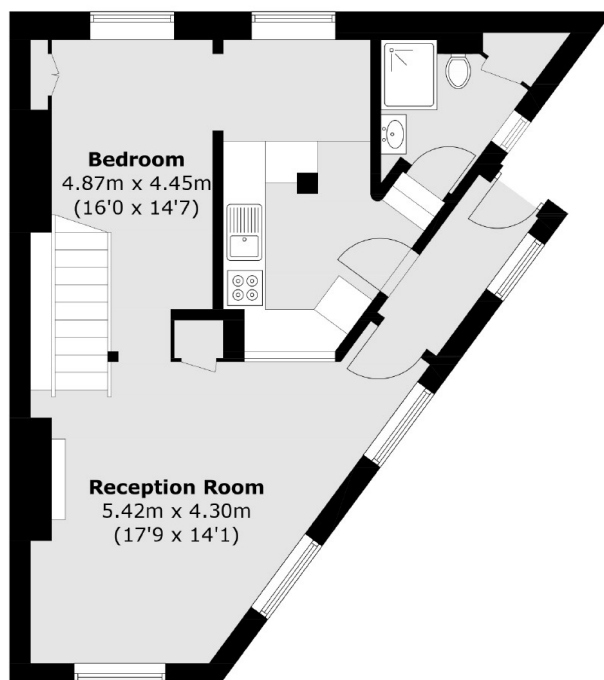
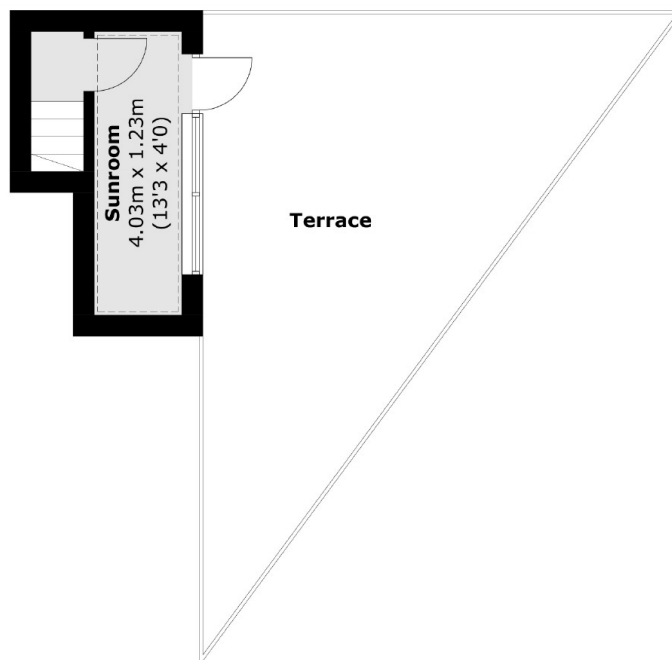
An unique one bedroom, top floor apartment featuring a magnificent roof terrace with incredible near 360 degree views including over Waterlow Park and across the London skyline.

In the very heart of the village amongst the shops, café society and just moments from Waterlow Park and the local transport connections.

### Features

- Outstanding Views
- Roof Terrace
- Village Location
- Reception
- Kitchen
- Sunroom

# Highgate High Street, London, N6



Total area (approx.): 58.75 sq. m (632 sq. ft)  
Terrace (approx.): 29.02 sq. m (312 sq. ft)