



**Highgate West Hill, N6**

**£2,000,000**

**Dexters**



## Highgate West Hill, N6

In the heart of Highgate Village, moments from the café society, historical Pond Square and overlooking a grass covered reservoir towards the Grove and Hampstead Heath beyond

This substantial Victorian property, approaching 2,500 sq ft has accommodation arranged over four storeys and is approached via the main entrance door to a charming entrance hallway with fan light, corbels and tiled flooring.

We understand that the basement flat may be available, subject to negotiation.

The bay fronted reception rooms are both spacious, each with feature fireplaces and have a view towards The Grove and the kitchen/diner provides a spacious area for the whole family.

The flexible bedroom accommodation feature a main suite with bedroom, bathroom, dressing area and a useful mezzanine study area with village views.

Home to a number of celebrities, the village is perched on top of a hill, 136 metres (446 ft) above sea level at its highest point and has a wealth of history along with past notable residents.

### Features

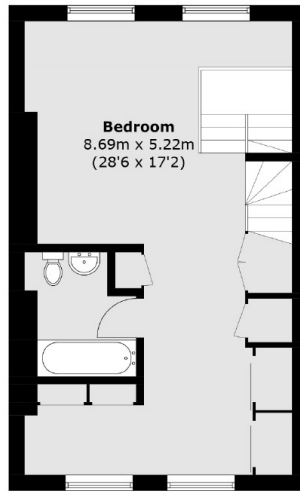
- Four Bedrooms
- Four Bathrooms
- Two Reception Rooms
- Kitchen/Diner
- Mezzanine Study Area
- Roof Terrace



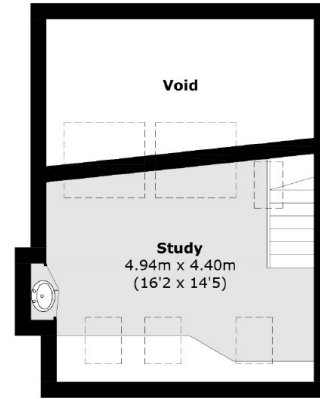




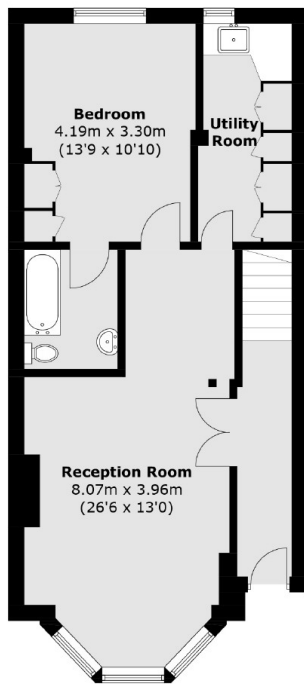
# Highgate West Hill, London, N6



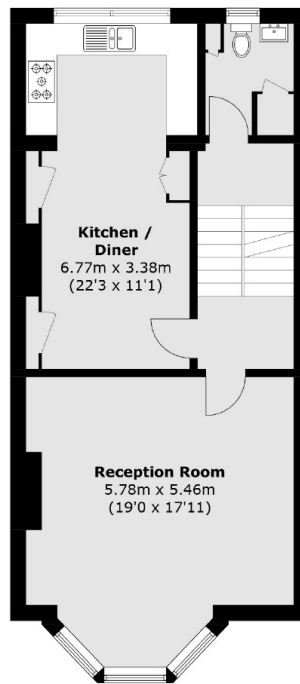
**Third Floor**



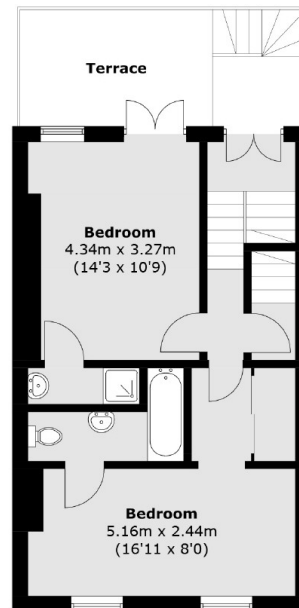
**Fourth Floor**



**Raised Ground Floor**



**First Floor**



**Second Floor**

Total area (approx.): 232.0 sq. m (2,497.2 sq. ft)  
Terrace: 12.4 sq. m (133.5 sq. ft)