



Hazellville Road, N19

£285,000

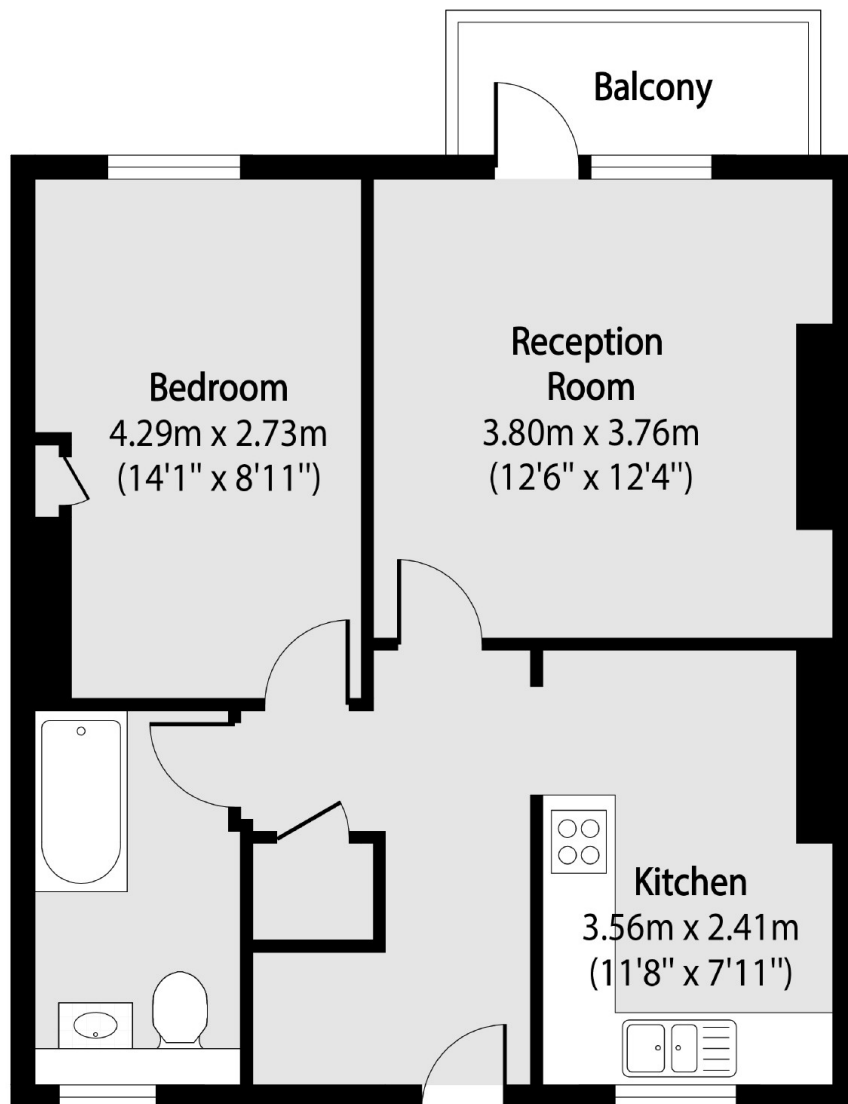
A generous double bedroom apartment in this popular lift serviced development set within communal grounds. With scope for further improvement the property is ideal for a first time buyer.

The block is situated on the edge of the Whitehall Park Conservation Area with local convenience stores nearby and approximately half a mile from Archway Underground station and Crouch End Broadway.

Features

- Double Bedroom
- Reception Room
- Kitchen
- Bathroom
- Balcony
- Communal Gardens

Hazellville Road, London, N19



Total area (approx): 49.50 sq m (533 sq. ft)

Balcony total area (approx): 3.19 sq m (34 sq. ft)