



Cromwell Avenue, N6

£425,000

In this popular tree lined road between the Village and Underground station, a delightful Victorian conversion with a modern open-plan kitchen flowing into a defined dining area and reception.

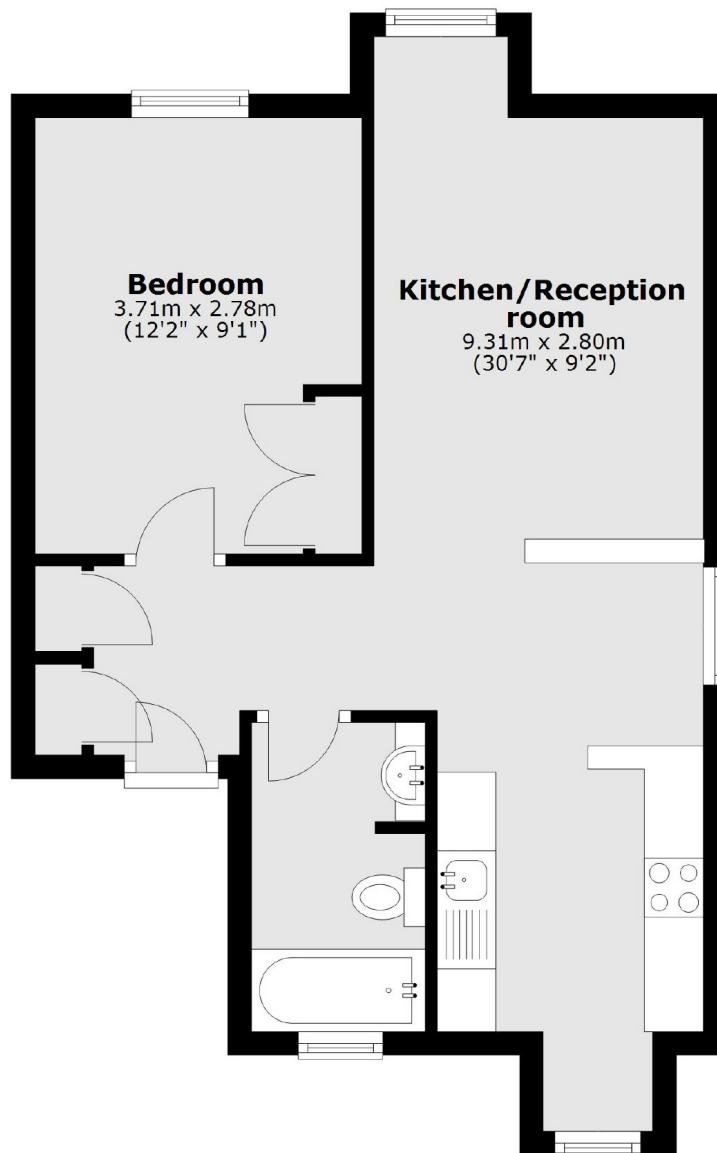
Cromwell Avenue is a delightful location, perfectly placed for access to transport, Highgate Village with it's shops and restaurants, Waterlow Park and Hampstead Heath.

Features

- Victorian Conversion
- Double Bedroom
- Open Plan Kitchen
- Reception Room
- Dining Area
- Close to Tube

**Cromwell Avenue,
London, N6**

Third Floor



Total area: approx. 41.4 sq. metres (445.5 sq. feet)

Dexters

Highgate
35A Highgate High Street
London
N6 5JT
Sales
020 8545 8584

Energy Rating: - We aim to make our particulars both accurate and reliable. However they are not guaranteed; nor do they form part of an offer or contract. If you require clarification on any points then please contact us, especially if you're traveling some distance to view. Please note that appliances and heating systems have not been tested and therefore no warranties can be given as to their good working order.

 **RICS** | Regulated
Estate Agent
and Letting Agent

dexters.co.uk