



Savernake Road, NW3

£3,000 Per calendar month

A split level three double bedroom apartment set on the top two floors of this purpose built block. With an open plan kitchen reception room that has direct access to a private terrace, two bathrooms and wooden floor throughout.

Savernake Road is located at the foot of Hampstead Heath and a short walk from Hampstead Heath Overground Station

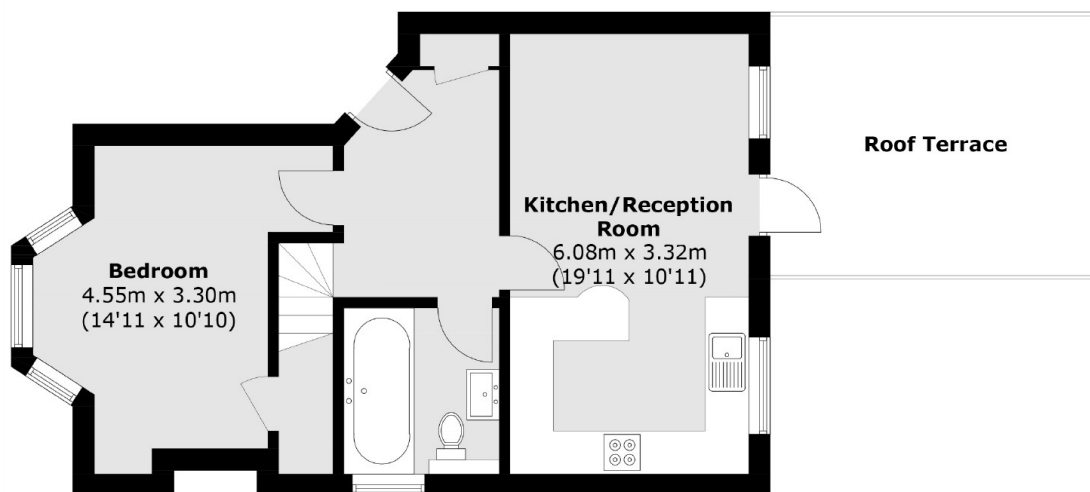
Features

- Three Double Bedrooms
- Two Bathrooms
- Split Level
- Wood Floor Throughout
- Private Terrace
- Storage

Savernake Road, London, NW3



Third Floor



Second Floor

Total area (approx.): 84.3 sq. m (907.4 sq. ft)
(Excluding Eaves)

Roof Terrace area : 16.2 sq. m (174.4 sq. ft)