



West Heath Road, NW3

£300 Per week

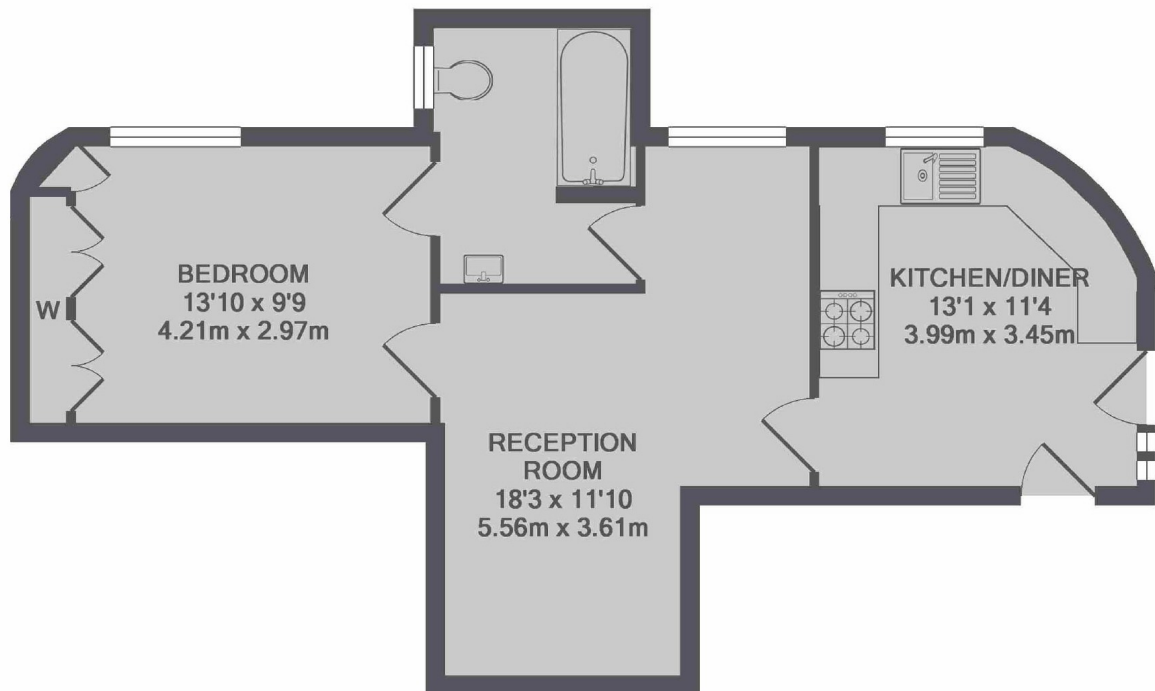
* VIDEO VIEWING AVAILABLE SOON * A refurbished one double bedroom apartment set on the ground floor of this mansion house privately set at the top of the hill and offering beautiful views over North West London.

This property is located close to Golders Hill Park, with Childs Hill and Golders Green both within easy reach. Hampstead Village is also easily accessible.

Features

- One double bedroom
- One bathroom
- Separate kitchen
- Ample Storage
- Wood floors throughout
- Ground Floor

West Heath Road, London, NW3



TOTAL APPROX. FLOOR AREA 491 SQ.FT. (45.7 SQ.M.)

Contact

To arrange a viewing call our office on the number below or visit our website.



Energy Rating: D. We aim to make our particulars both accurate and reliable. However they are not guaranteed; nor do they form part of an offer or contract. If you require clarification on any points then please contact us, especially if you're traveling some distance to view. Please note that appliances and heating systems have not been tested and therefore no warranties can be given as to their good working order.