

College Crescent, NW3

£403 Per week

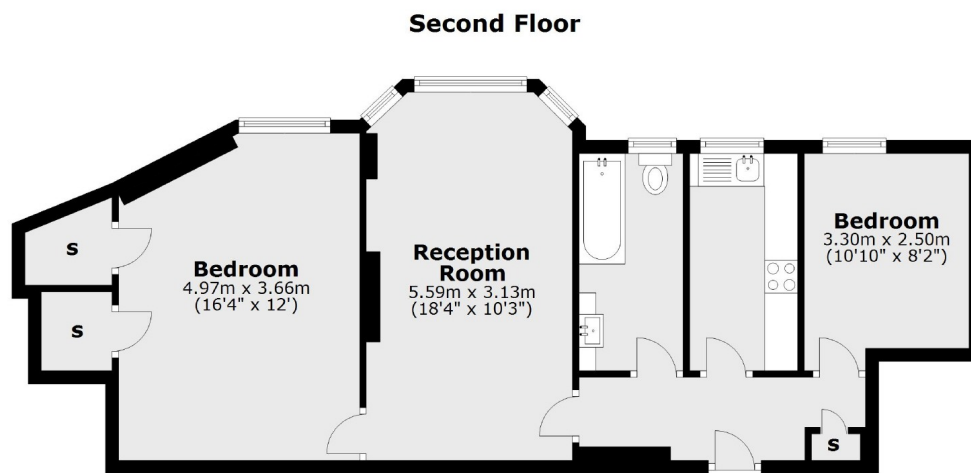
Two double bedroom flat with a good size reception located on the 2nd floor of a purpose built block with day porter. Separate kitchen with dishwasher, Bathroom with shower over bath and wooden flooring.

Northways is located a very short walk from Swiss Cottage tube giving you quick access to the City and Central London on the Jubilee Line.

Features

- Two Double Bedrooms
- Reception Room
- Separate Kitchen
- 2nd Floor (with lift)
- Day Porter
- Swiss Cottage Tube

College Crescent, London, NW3



Total area: approx. 63.4 sq. metres (682.6 sq. feet)

Contact

To arrange a viewing call our office on the number below or visit our website.



Energy Rating: C. We aim to make our particulars both accurate and reliable. However they are not guaranteed; nor do they form part of an offer or contract. If you require clarification on any points then please contact us, especially if you're traveling some distance to view. Please note that appliances and heating systems have not been tested and therefore no warranties can be given as to their good working order.