



Primrose Hill Road, NW3

£650,000

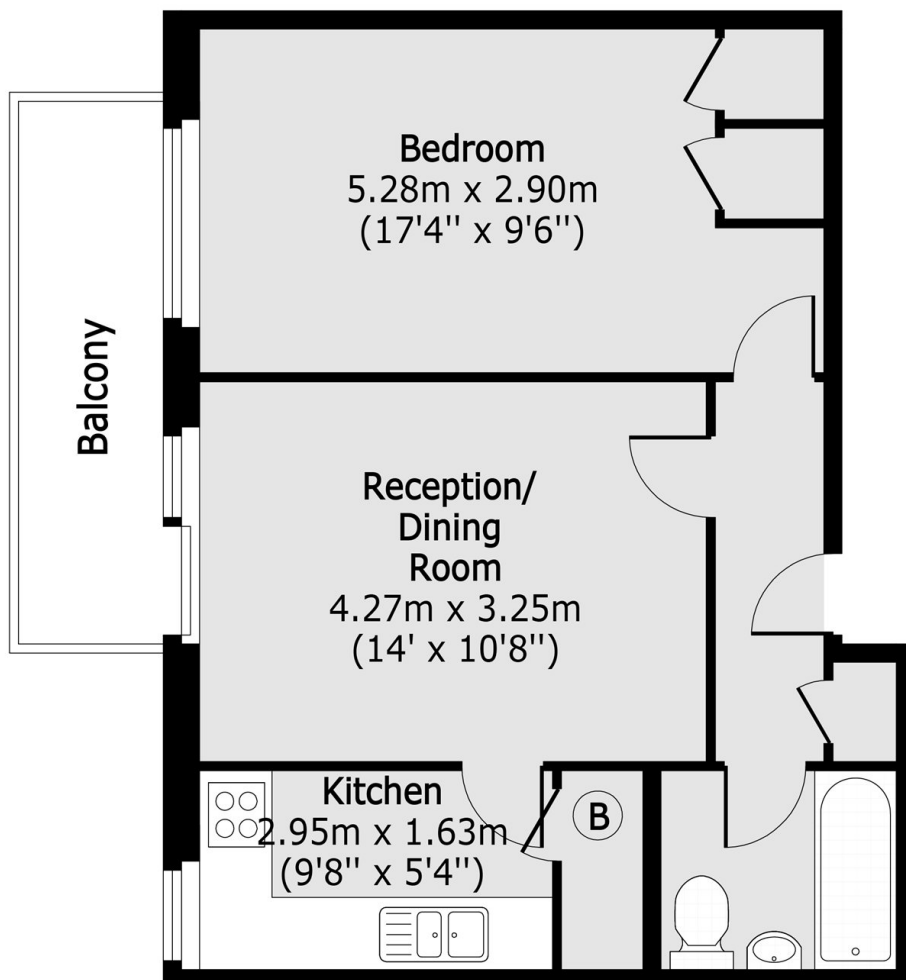
A well proportioned one double bedroom apartment featuring a private balcony with beautiful, far reaching views across London. The property also offers a separate kitchen and is sold with a share of freehold.

Set in a highly regarded Hampstead location, King's College Court enjoys an elevated position with exceptional outlooks. Hampstead Heath and the amenities of South End Green are within easy reach. Excellent transport links include Hampstead Heath Overground and Belsize Park Underground (Northern line).

Features

- One Double Bedroom
- Chain Free
- Share of Freehold
- Balcony
- Excellent Views
- Off Street Parking

Primrose Hill Road, London, NW3



Total area (approx): 43.29 sq m (466 sq. ft)

Balcony total area (approx): 5.57 sq m (60 sq. ft)

Dexters

Hampstead
56 Heath Street
London
NW3 1DL
Sales
020 7433 0273

Energy Rating: B. We aim to make our particulars both accurate and reliable. However they are not guaranteed; nor do they form part of an offer or contract. If you require clarification on any points then please contact us, especially if you're traveling some distance to view. Please note that appliances and heating systems have not been tested and therefore no warranties can be given as to their good working order.

 **RICS** | Regulated
Estate Agent
and Letting Agent

[dexters.co.uk](https://www.dexters.co.uk)