



Mortimer Crescent, NW6

£465,000

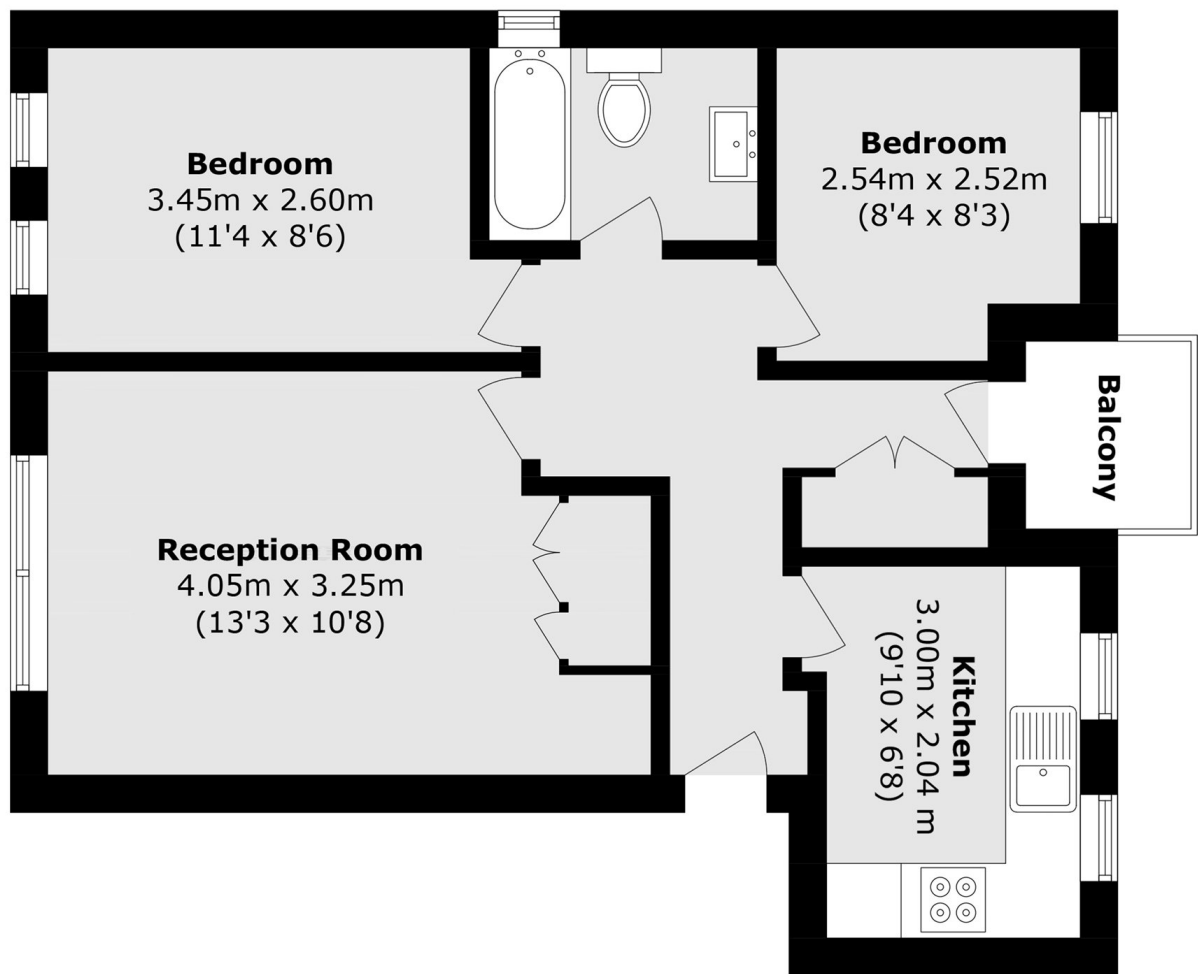
A spacious two bedroom apartment of approximately 550 sq ft, offered chain free. The property features a bright reception room with access to a private balcony, a separate kitchen, and balanced accommodation throughout. An ideal opportunity for first-time buyers or investors.

Situated in a popular residential pocket, Mortimer Crescent offers excellent access to local shops, cafés, and everyday amenities. Queen's Park and the open spaces of Paddington Recreation Ground are nearby. Strong transport links include Kilburn Park (Bakerloo Line), Kilburn (Jubilee Line), and Brondesbury Overground.

Features

- Two Bedrooms
- Separate Kitchen
- Private Balcony
- Chain Free
- Approximately 550 Sq.Ft
- Central Location

Mortimer Crescent, London, NW6



Total area (approx.): 49.6 sq. m (533.8 sq. ft)

Balcony area (approx.): 2.08 sq. m (22.3 sq. ft)