



Redington Gardens, NW3

£1,300,000

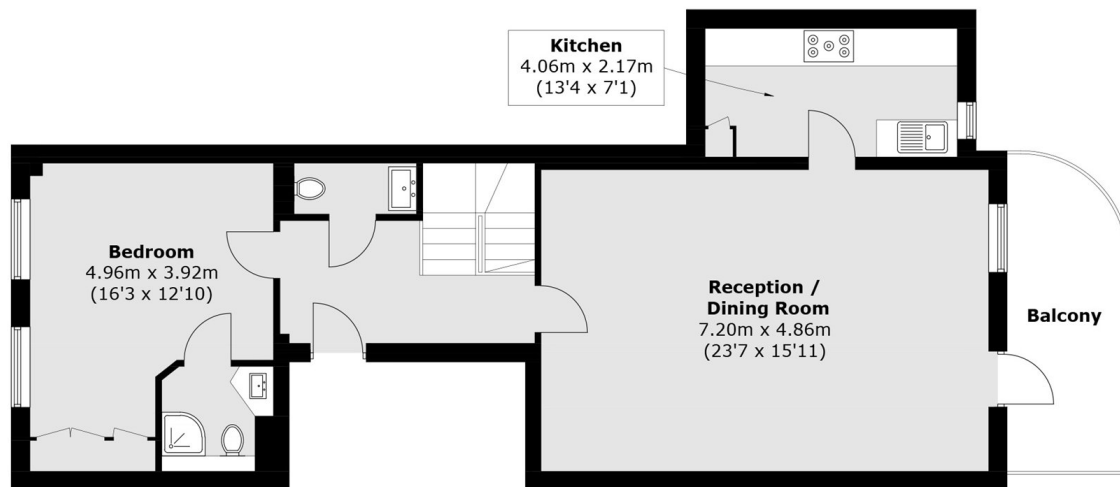
A beautifully arranged three-bedroom duplex apartment of approximately 1,150 sq ft, set within an impressive red-brick residence. The property features a spacious reception room opening onto a south-west facing balcony with views over landscaped communal gardens. Additional highlights include a modern kitchen, an en-suite bedroom, two further doubles, and a family bathroom.

Located on the Redington Gardens which is a quiet residential cul-de-sac and is within a short distance of Hampstead Village and the Heath.

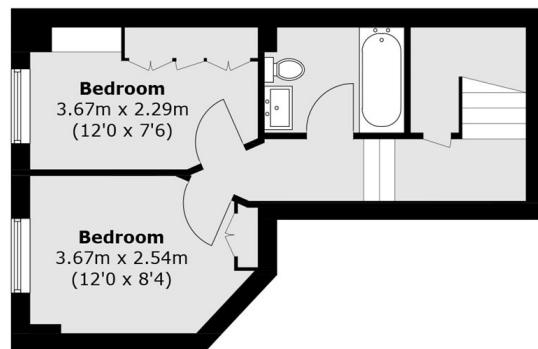
Features

- Three Bedrooms
- Two Bathrooms
- Communal Garden
- Lift
- Balcony
- Parking

Redington Gardens, London, NW3



First Floor



Ground Floor

Total area (approx.): 106.2 sq. m (1,143.1 sq. ft)
Balcony : 9.2 sq. m (99.0 sq. ft)