



## Tudor Close, NW3

### £550,000

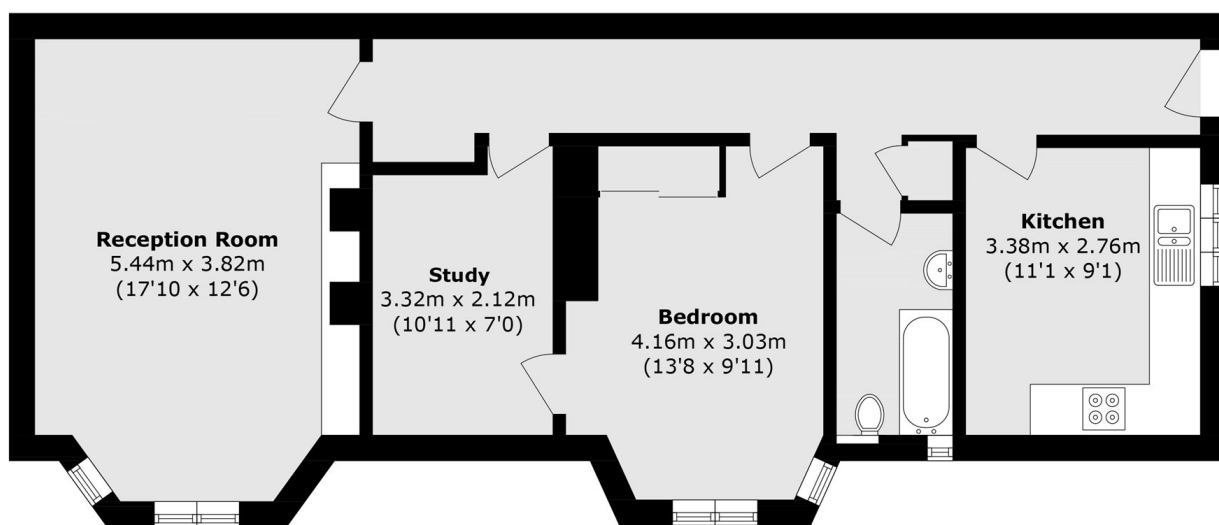
A spacious one-bedroom apartment of approximately 750 sq ft, featuring a bright reception room, separate kitchen, and dedicated office space. The property benefits from access to a patio area and beautifully maintained communal gardens, a long lease, and eligibility for a residents' parking permit.

Located in a peaceful Hampstead enclave, Tudor Close offers a blend of charm and convenience near Belsize Park and Hampstead Village. Residents enjoy easy access to Hampstead Heath, local cafés, and boutique shops, with excellent transport links via Belsize Park (Northern Line) and Hampstead Heath (Overground).

### Features

- One Double Bedroom
- Separate Study Room
- Spacious Reception
- Long Lease
- Communal Garden
- Approximately 750 Sq.Ft

# Tudor Close, London, NW3



Total area (approx.): 67.3 sq. m (724.4 sq. ft)