



Crossfield Road, NW3

£1,250,000

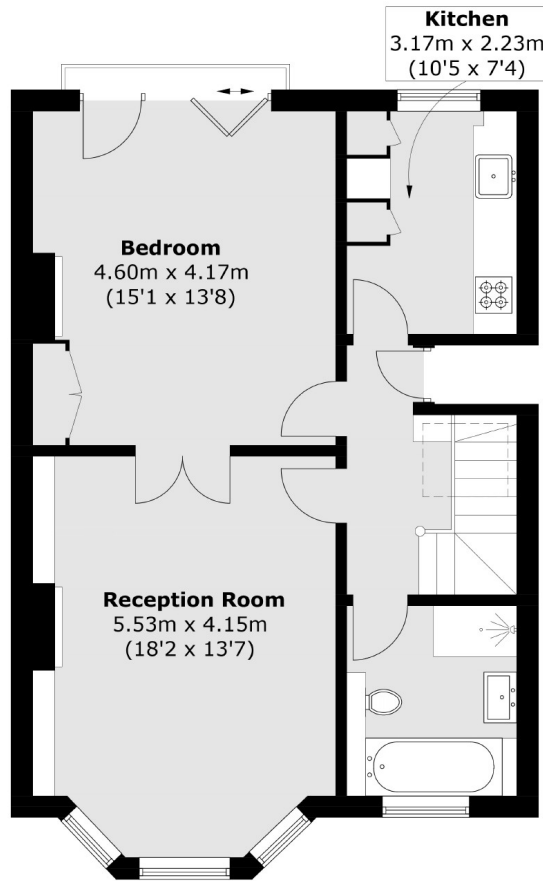
A fabulous double reception, two bedroom duplex apartment (can be used as a three bedroom), with a Juliet balcony, on the top floor of this character period conversion. The property also has a high end Italian kitchen with Gaggenau appliances and a gas fireplace.

Located on this delightful residential street in Belsize Park, with easy access to Swiss Cottage Underground Station (Jubilee Line) and Belsize Park Underground Station (Northern Line). Enjoy the boutique shops, cafés, and restaurants that give this sought after neighbourhood its village feel.

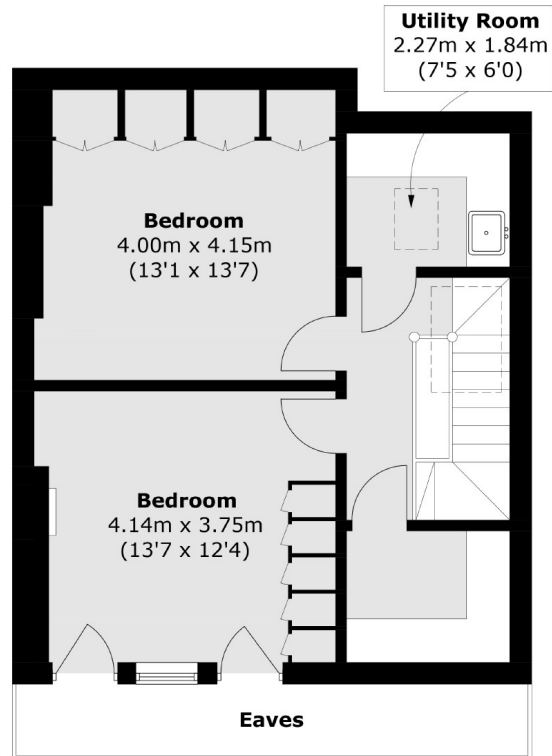
Features

- Excellent Condition
- Two/Three Bedrooms
- Utility Room
- Juliet Balcony
- Chain Free
- Sole Agent

Crossfield Road, London, NW3



Second Floor



Third Floor

Total area (approx.): 113.3 sq. m (1,219.5 sq. ft)
(Excluding Eaves / Void)