



## Netherhall Gardens, NW3

### £1,000,000

A bright and spacious two double bedroom apartment presented in excellent decorative order, with a large reception room, a balcony, guest WC and a lockup garage.

This popular block on this charming leafy Hampstead street, is situated 0.3 miles from Finchley Road underground station (Jubilee & Metropolitan lines) and 0.2 miles from Finchley Road and Frognal overground station.

### Features

- Large Reception
- Two Double Bedrooms
- Balcony
- Large Lockup Garage
- First Come First Served Parking
- Share of Freehold





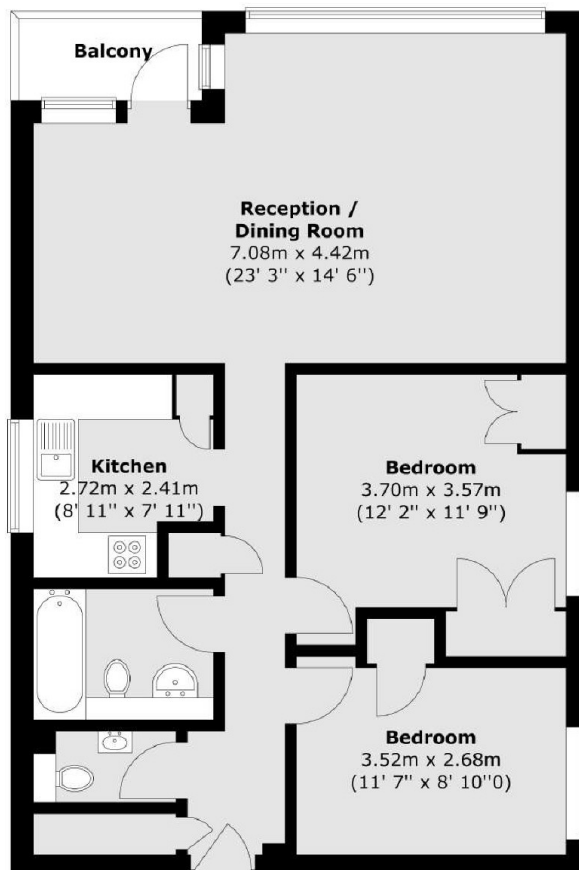
**Netherhall Gardens, NW3**





# Netherhall Gardens, London, NW3

## Second Floor



Total internal area (approx.) : 75 sq. m (807 sq.ft)

Total balcony area (approx.) : 3 sq. m (32 sq. ft)

# Dexters

Hampstead  
56 Heath Street  
London  
NW3 1DL  
Sales  
020 7433 0273

Energy Rating: C. We aim to make our particulars both accurate and reliable. However they are not guaranteed; nor do they form part of an offer or contract. If you require clarification on any points then please contact us, especially if you're traveling some distance to view. Please note that appliances and heating systems have not been tested and therefore no warranties can be given as to their good working order.

 **RICS** | Regulated  
Estate Agent  
and Letting Agent

[dexters.co.uk](https://www.dexters.co.uk)