



## Adamson Road, NW3

£3,250 Per calendar month

Two double bedroom split level flat with a large roof terrace located in Belsize Park. The flat is set over the fourth and fifth floors of a purpose built block. There are living and dining rooms as well as a separate kitchen. Two bedrooms, two bathrooms and lift.

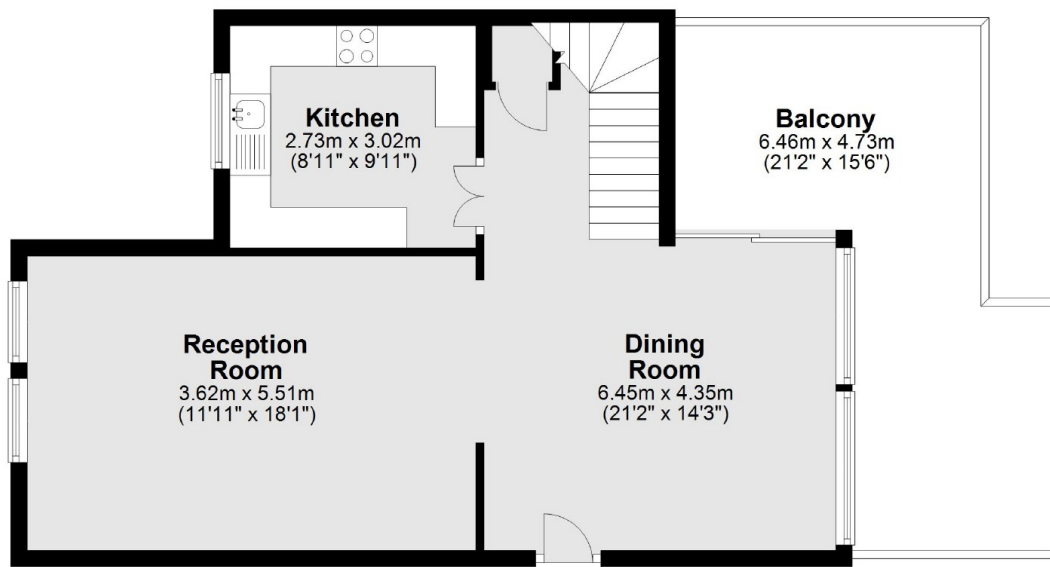
Adamsfield House is located a short walk to Swiss Cottage tube station giving you quick access to the City and Central London on the Jubilee Line.

### Features

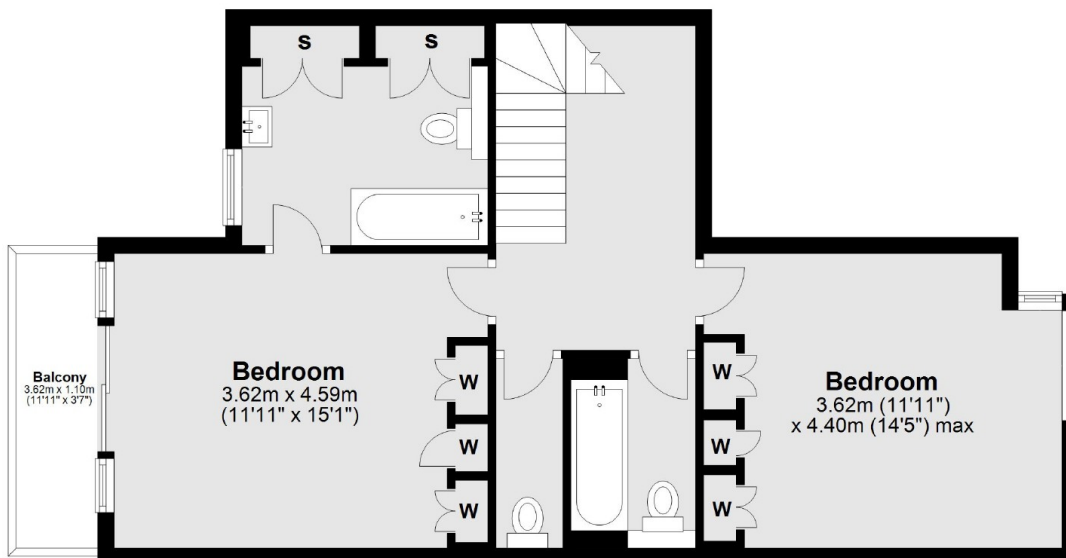
- Two Double Bedrooms
- Two Bathrooms
- Two Reception Rooms
- Split Level
- Roof Terrace
- Swiss Cottage

Adamson Road,  
London, NW3

### Second Floor



### Third Floor



Main area: Approx. 108.5 sq. metres (1168.2 sq. feet)  
Plus balconies, approx. 4.0 sq. metres (42.9 sq. feet)

**Dexters**

Hampstead  
56 Heath Street  
London  
NW3 1DL  
Lettings  
020 7433 0274

Energy Rating: . We aim to make our particulars both accurate and reliable. However they are not guaranteed; nor do they form part of an offer or contract. If you require clarification on any points then please contact us, especially if you're traveling some distance to view. Please note that appliances and heating systems have not been tested and therefore no warranties can be given as to their good working order.

**RICS** | Regulated  
Estate Agent  
and Letting Agent

dexters.co.uk