



## Finchley Road, NW3

### £460,000

An excellent one bedroom flat set on the second floor of a Victorian house and being particularly conveniently located for multiple transport facilities and having access to superb communal gardens. The property benefits from beautiful communal gardens.

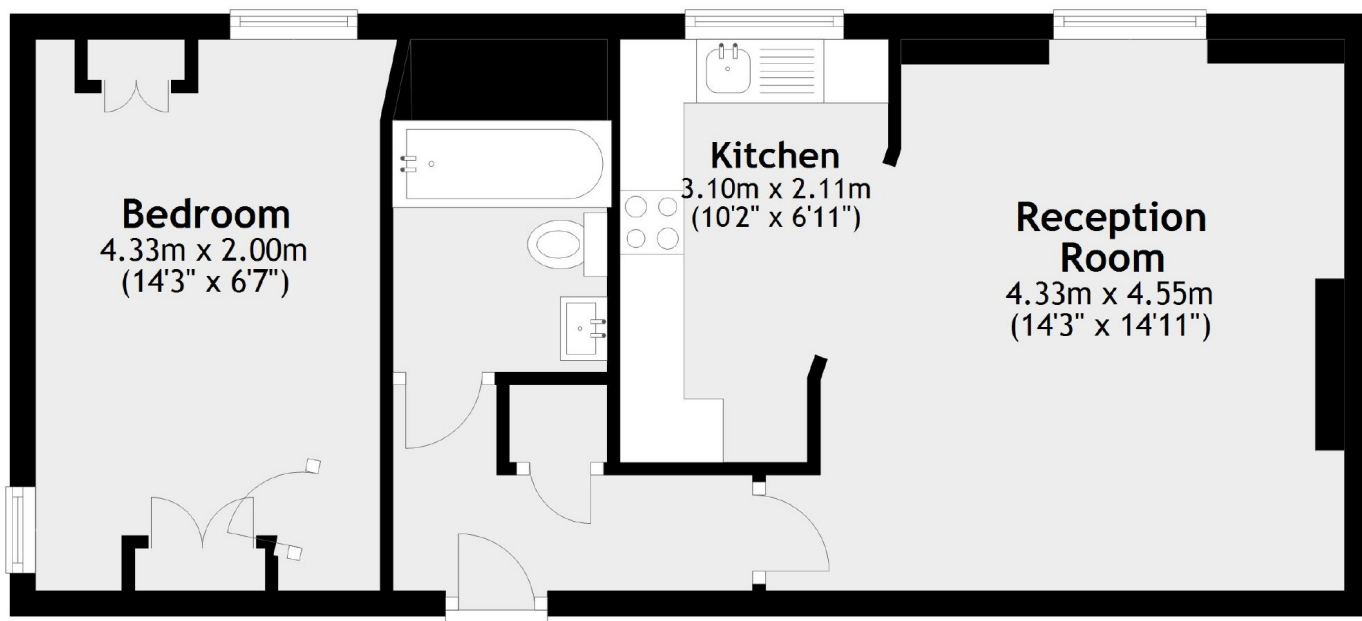
The flat is offered in excellent decorative order and is particularly quiet as it has the benefit of what is effectively quadruple glazing to all of the windows.

### Features

- Reception Room
- Excellent Transport Links
- Double Bedroom
- Bathroom
- Communal Gardens
- Convenient Location

**Finchley Road,  
London, NW3**

## Second Floor



Total area: approx. 44.6 sq. metres (479.7 sq. feet)

**Dexters**

Hampstead  
56 Heath Street  
London  
NW3 1DL  
Sales  
020 7433 0273

Energy Rating: D. We aim to make our particulars both accurate and reliable. However they are not guaranteed; nor do they form part of an offer or contract. If you require clarification on any points then please contact us, especially if you're traveling some distance to view. Please note that appliances and heating systems have not been tested and therefore no warranties can be given as to their good working order.

 **RICS** | Regulated  
Estate Agent  
and Letting Agent

[dexters.co.uk](http://dexters.co.uk)