



Finchley Road, NW3

£450,000

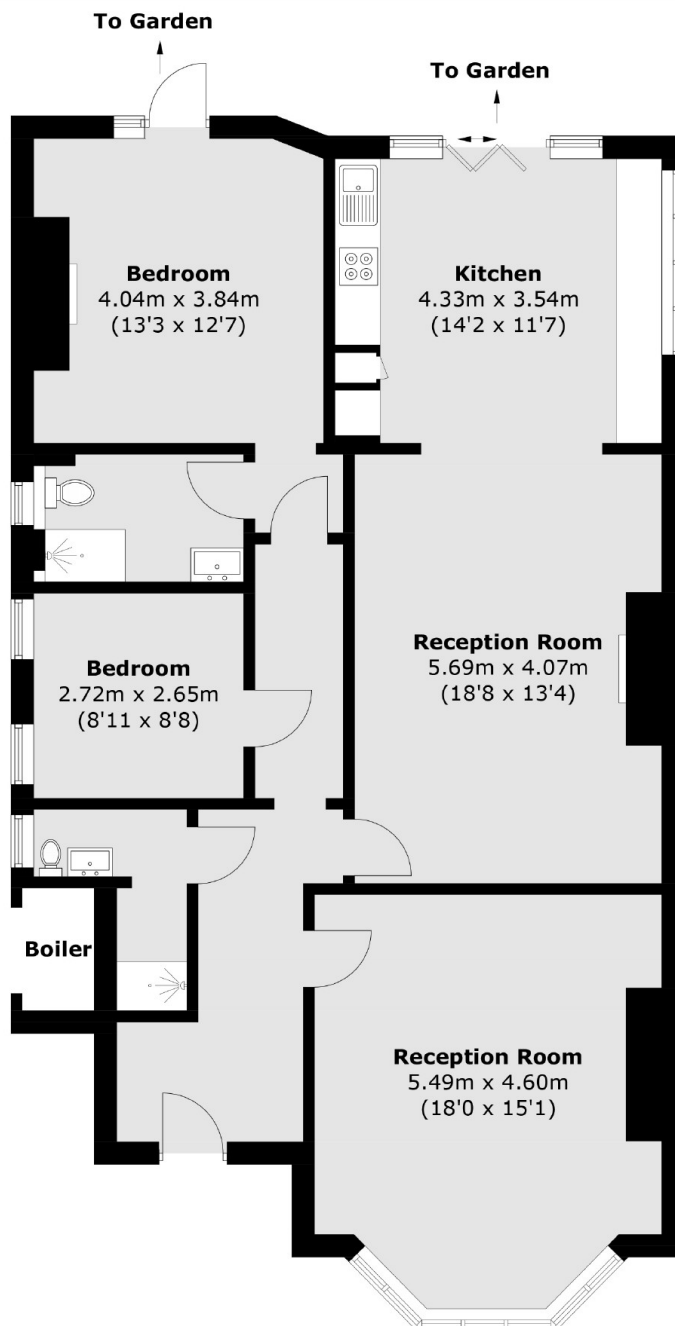
A charming, chain-free three-bedroom apartment boasting high ceilings and a spectacular 100ft private garden, with exciting scope to extend (STPP). Offered with a short 48-year lease so suitable for cash buyers only.

The flat is located in a convenient location for both Finchley Road station (Jubilee and Metropolitan line) and Golders Green (Northern line) as well as local shops and restaurants.

Features

- Cash Buyers Only
- Large Private Garden
- Potential to Extend (STPP)
- Short Lease
- High Ceilings
- Three Bedrooms

Finchley Road, London, NW3



Total area (approx.): 114.2 sq. m (1229.2 sq. ft)
(Excluding Boiler)

Dexters

Hampstead
56 Heath Street
London
NW3 1DL
Sales
020 7433 0273

Energy Rating: D. We aim to make our particulars both accurate and reliable. However they are not guaranteed; nor do they form part of an offer or contract. If you require clarification on any points then please contact us, especially if you're traveling some distance to view. Please note that appliances and heating systems have not been tested and therefore no warranties can be given as to their good working order.

 **RICS** | Regulated
Estate Agent
and Letting Agent

[dexters.co.uk](https://www.dexters.co.uk)