



## Hermitage Lane, NW2

£1,800 Per calendar month

A spacious ground floor apartment with direct access to a large private patio within walking distance to Hampstead Heath. The property has a generous reception room, separate kitchen, double bedroom and bathroom with bath and overhead shower.

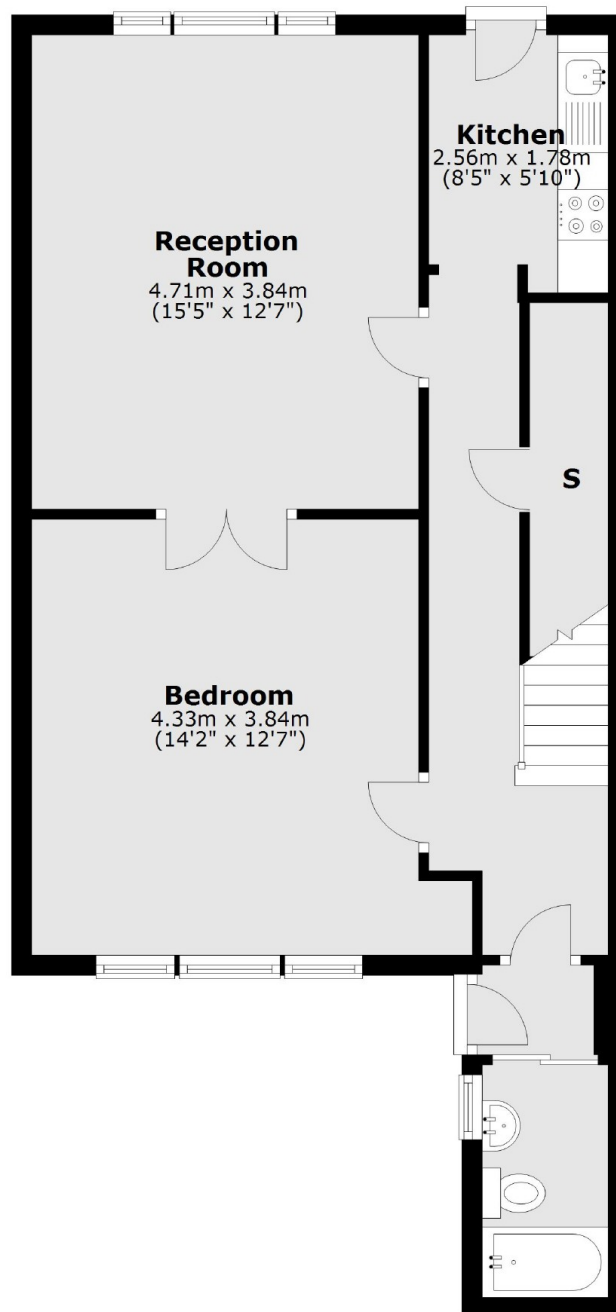
Located close to Hampstead Village and the green open spaces of Hampstead Heath. There's also good transport links with Finchley Road nearby.

### Features

- One bedroom
- Patio Garden
- Bathroom
- Separate Kitchen
- Close to transport
- Close to Hampstead Heath

Hermitage Lane,  
London, NW2

## Ground Floor



Total area: approx. 56.5 sq. metres (608.5 sq. feet)

**Dexters**

Hampstead  
56 Heath Street  
London  
NW3 1DL  
Lettings  
020 7433 0274

Energy Rating: . We aim to make our particulars both accurate and reliable. However they are not guaranteed; nor do they form part of an offer or contract. If you require clarification on any points then please contact us, especially if you're traveling some distance to view. Please note that appliances and heating systems have not been tested and therefore no warranties can be given as to their good working order.

 **RICS** | Regulated  
Estate Agent  
and Letting Agent

[dexters.co.uk](http://dexters.co.uk)