



Haverstock Hill, NW3

£3,650 Per calendar month

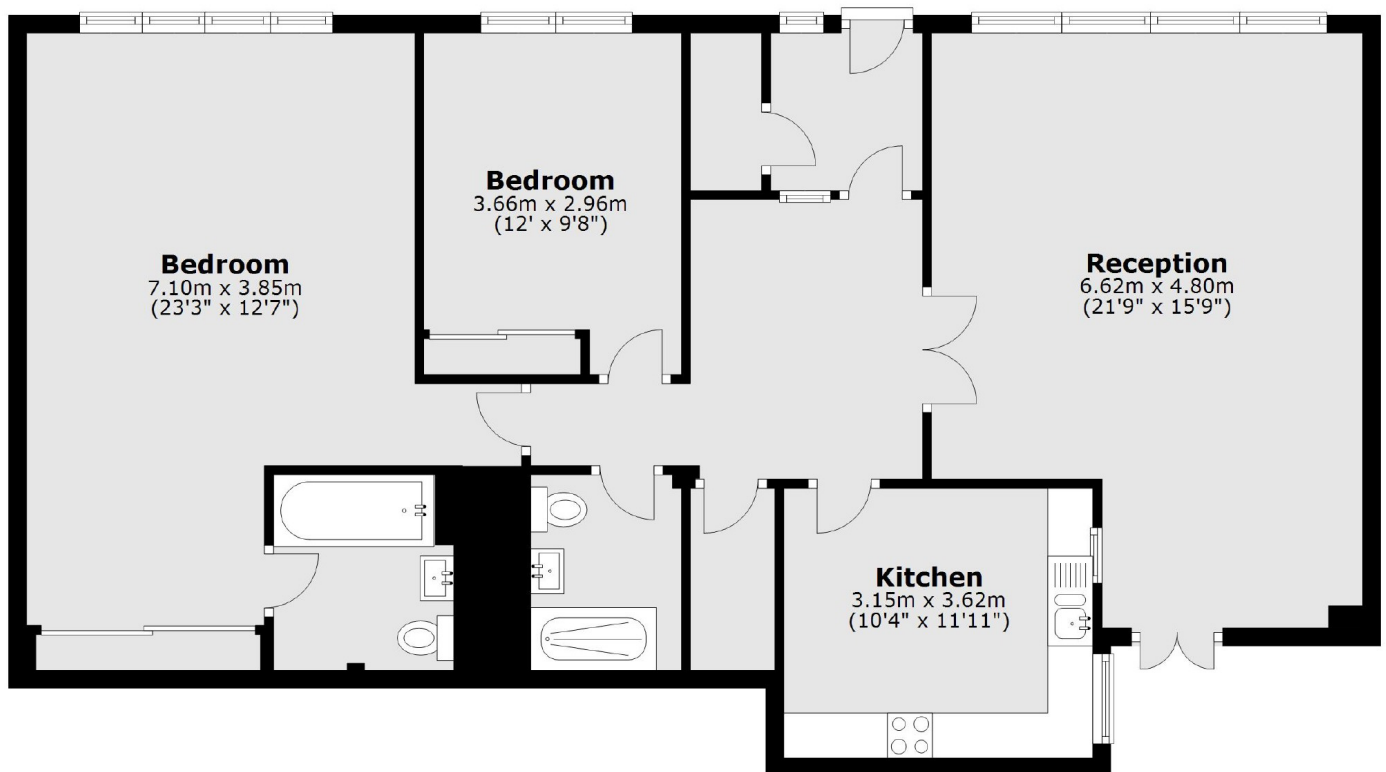
A spacious two double bedroom apartment on the ground floor of this purpose built block. The property has a large reception room, separate kitchen, two bathrooms and off street parking.

The flat is located short walk away from Belsize Park Station giving you quick access to the City and Central London on the Northern Line

Features

- Two Double Bedrooms
- Ground Floor
- Direct Access
- Off Street Parking
- Wood Floors Throughout
- Separate Kitchen

Haverstock Hill, London, NW3



Total area: approx. 107.4 sq. metres (1155.9 sq. feet)

Dexters

Hampstead
56 Heath Street
London
NW3 1DL
Lettings
020 7433 0274

Energy Rating: C. We aim to make our particulars both accurate and reliable. However they are not guaranteed; nor do they form part of an offer or contract. If you require clarification on any points then please contact us, especially if you're traveling some distance to view. Please note that appliances and heating systems have not been tested and therefore no warranties can be given as to their good working order.

 **RICS** | Regulated
Estate Agent
and Letting Agent

[dexters.co.uk](https://www.dexters.co.uk)