



Finchley Road, NW3

£500,000

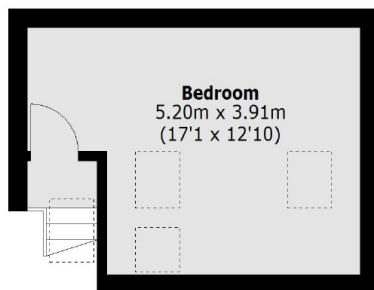
A well appointed two bedroom flat set on the top floor of a handsome building in a particularly convenient location for multiple transport facilities.

The flat is located in a convenient location for both Finchley Road station (Jubilee and Metropolitan line) and Golders Green (Northern line) as well as local shops and restaurants.

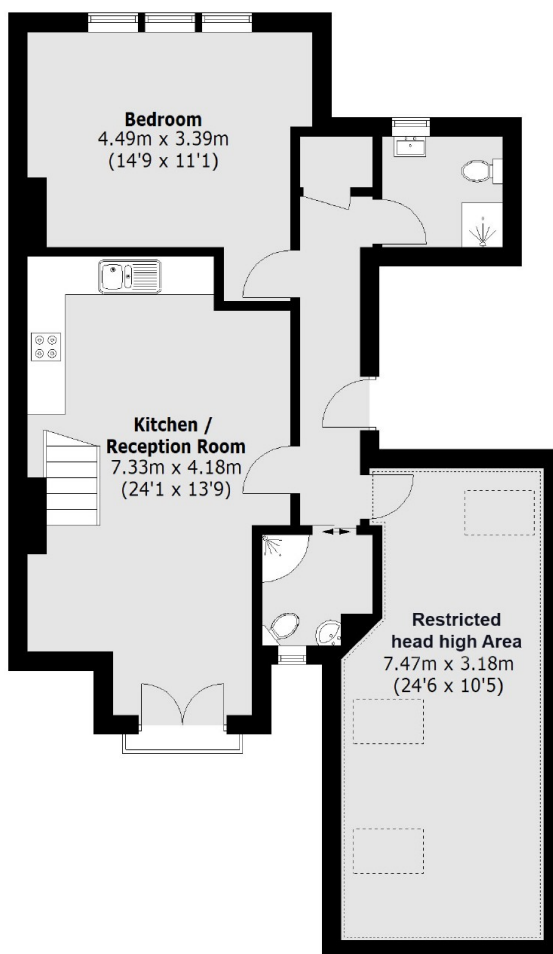
Features

- Two Bedrooms
- Two Shower Rooms
- Study
- Split-Level
- Reception Room
- Superb Decorative Condition

Finchley Road, London, NW3



Mezzanine Floor - Third Floor



Second Floor

Total area (approx.): 99.2 sq. m (1,067.7 sq. ft)
(Including Mezzanine Floor)