



Tudor Close, NW3

£461 Per week

Two double bedroom flat located within a popular mansion block in Belsize Park. Reception room, separate dining hall, newly refurbished kitchen, smart bathroom and separate WC. Parking available

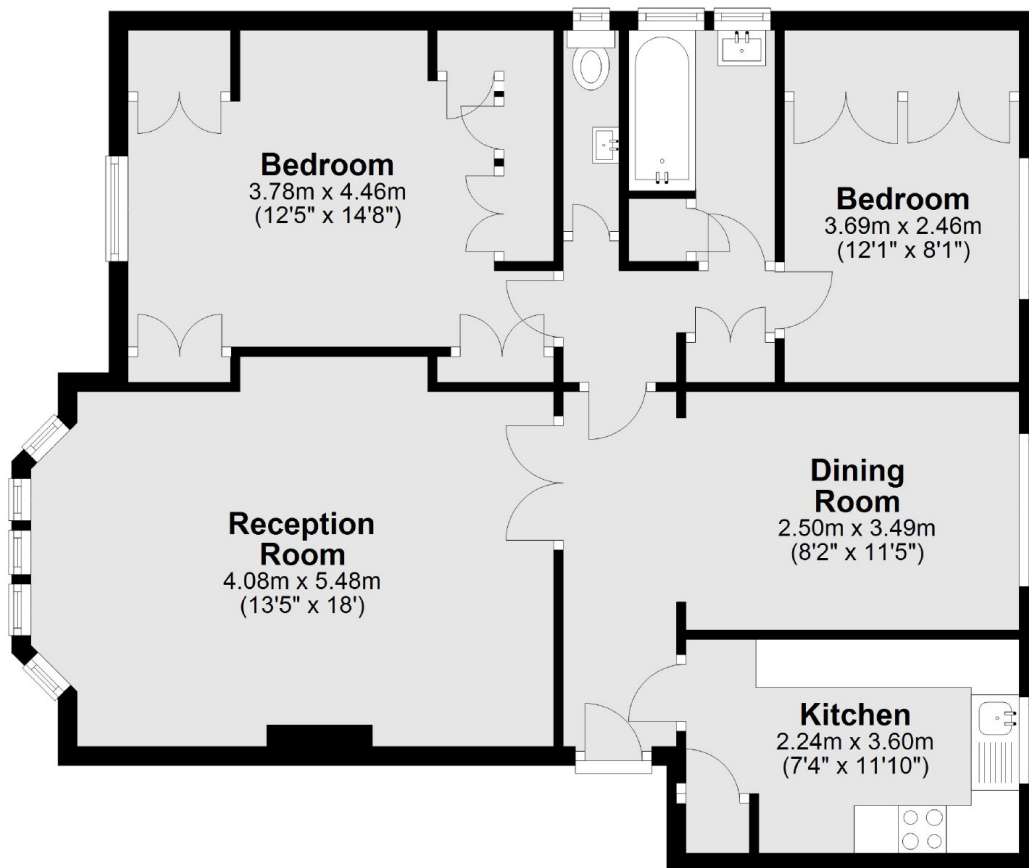
Tudor Close is located off Belsize Avenue is a few minutes walk from Belsize Park Tube station giving you quick access to the City and Central London on the Northern Line.

Features

Two Double Bedrooms
Two Reception Rooms
Separate Kitchen
2nd Floor
Parking Within The Development
Belsize Park Tube

Tudor Close, London, NW3

Second Floor



Total area: approx. 77.9 sq. metres (838.2 sq. feet)

Contact

To arrange a viewing call our office on the number below or visit our website.



Energy Rating: . We aim to make our particulars both accurate and reliable. However they are not guaranteed; nor do they form part of an offer or contract. If you require clarification on any points then please contact us, especially if you're traveling some distance to view. Please note that appliances and heating systems have not been tested and therefore no warranties can be given as to their good working order.