



Rudall Crescent, NW3

£1,600,000

A truly amazing split-level, two bedroom apartment within an impressive double-fronted Victorian period building with its own private entrance on the raised ground floor. Sold chain free.

Rudall Crescent is superbly located moments from the heath, the fashionable shops and restaurants on Hampstead High Street and Hampstead underground station (Northern line) 0.2 miles away

Features

- Two Double Bedrooms
- Victorian Building
- Private Entrance
- Split Level
- High Ceilings
- Wooden Flooring



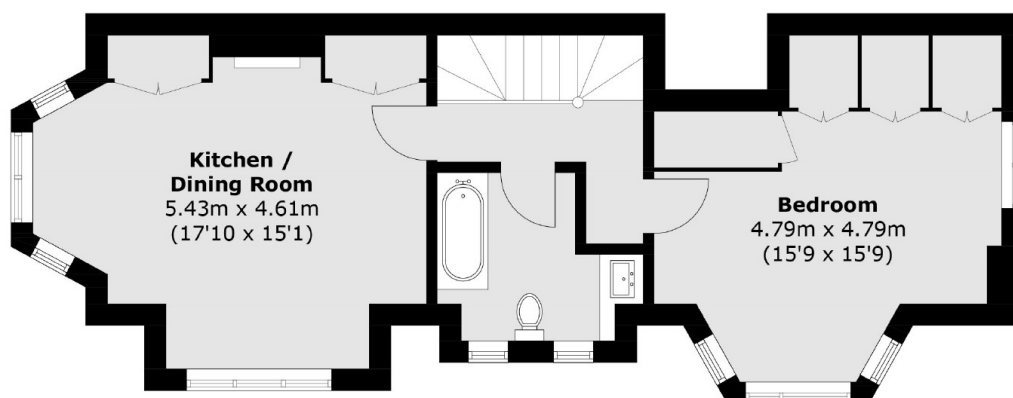
Rudall Crescent, NW3

The entrance level has a large reception with a feature fireplace and a spacious separate eat-in kitchen, as well as a guest WC off the grand entrance lobby. Both of the large double bedrooms are on the first floor, with the family bathroom on the landing between.

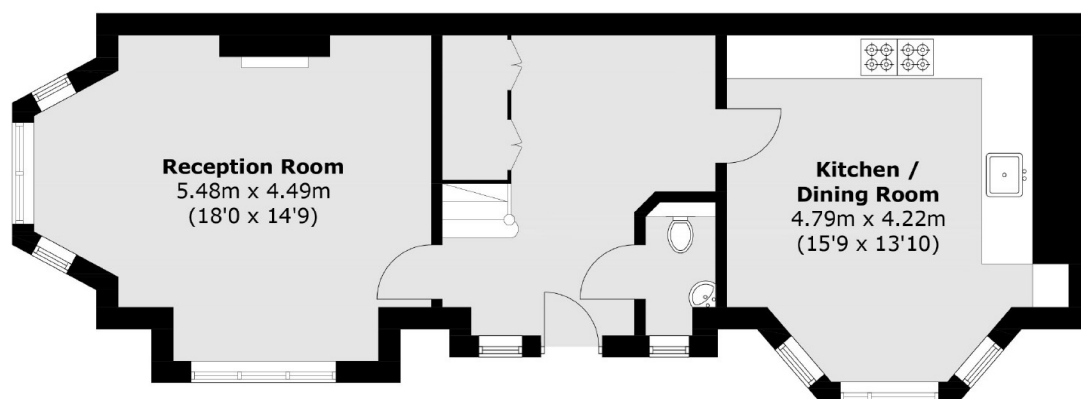
With high ceilings on both levels and a fantastic amount on natural light from multiple bay windows. The reception and both bedrooms have two aspects of windows and there is also wood flooring throughout.



Rudall Crescent, London, NW3



First Floor



Raised Ground Floor

Total area (approx.): 108.1 sq. m (1,163.6 sq. ft)