



Fellows Road, NW3
£2,500,000

Dexters



Fellows Road, NW3

A stylish two double bedroom garden apartment with stunning private garden and a share of the freehold. Offered chain free, this beautifully renovated garden apartment in Belsize Park blends indoor comfort with stunning outdoor appeal

Set on a peaceful, tree-lined street, it features a private entrance, share of freehold, and an exceptional garden, perfect for entertaining or relaxing.

Designed by award-winning Seesaw Studios, the interiors combine contemporary style with a warm, inviting feel. The Italian Snaidero kitchen includes high-spec Miele appliances, an integrated coffee machine, and a drinks fridge. Large Crittall doors open onto the sunlit garden.

A stylish garden outhouse with a shower adds flexible space for guests, a studio, or home office.

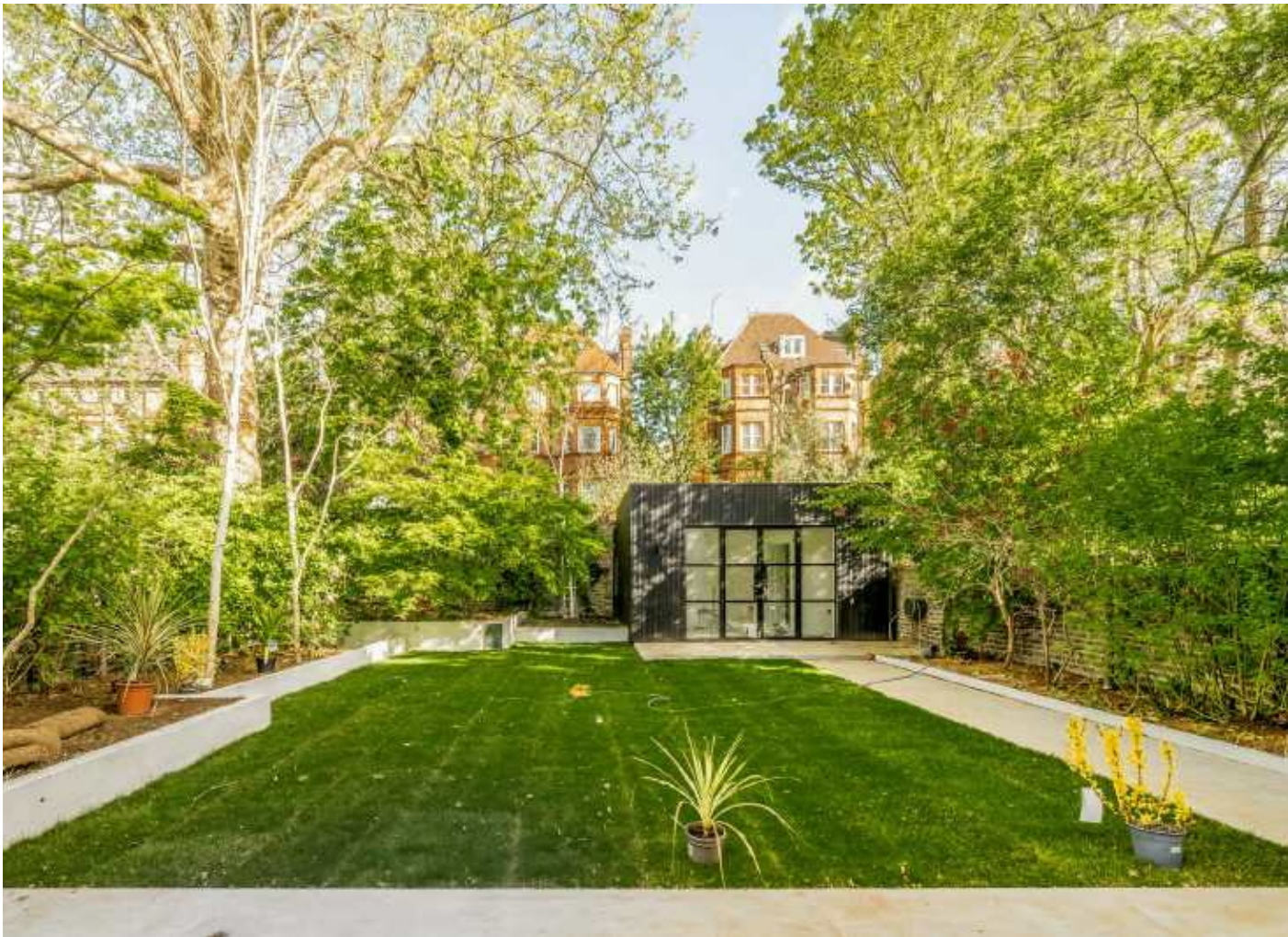
Located just moments from Hampstead Heath and Primrose Hill, Fellows Road offers easy access to Swiss Cottage (Jubilee line) and Belsize Park (Northern line). Enjoy the boutique shops, cafés, and restaurants that give this sought after neighbourhood its village feel.

Features

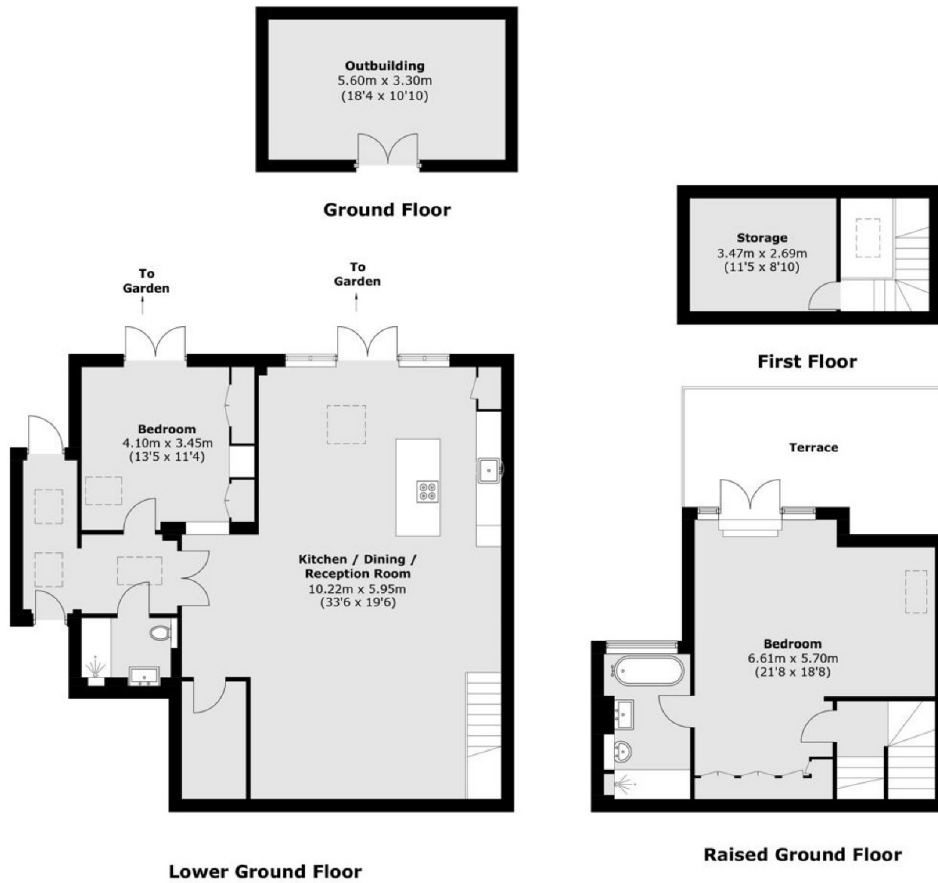
- Private Entrance
- Landscaped Garden
- Share of Freehold
- Stylish Renovation
- Garden Outhouse
- Two Bedrooms







Fellows Road, London, NW3



Total area (approx.): 160.1 sq. m (1,723.2 sq. ft)
Terrace: 18.8 sq. m (202.4 sq. ft)
Outbuilding: 18.4 sq. m (198.0 sq. ft)