



Netherhall Gardens, NW3

£6,750 Per calendar month

A superb four bedroom apartment on the first floor of a private gated building. The property has been interior designed and has a modern feel throughout. Other benefits include private parking and balcony.

Excellent located close to the boutique shops & restaurants of Hampstead Village and less than a mile to both Hampstead and Finchley Road tubes.

Features

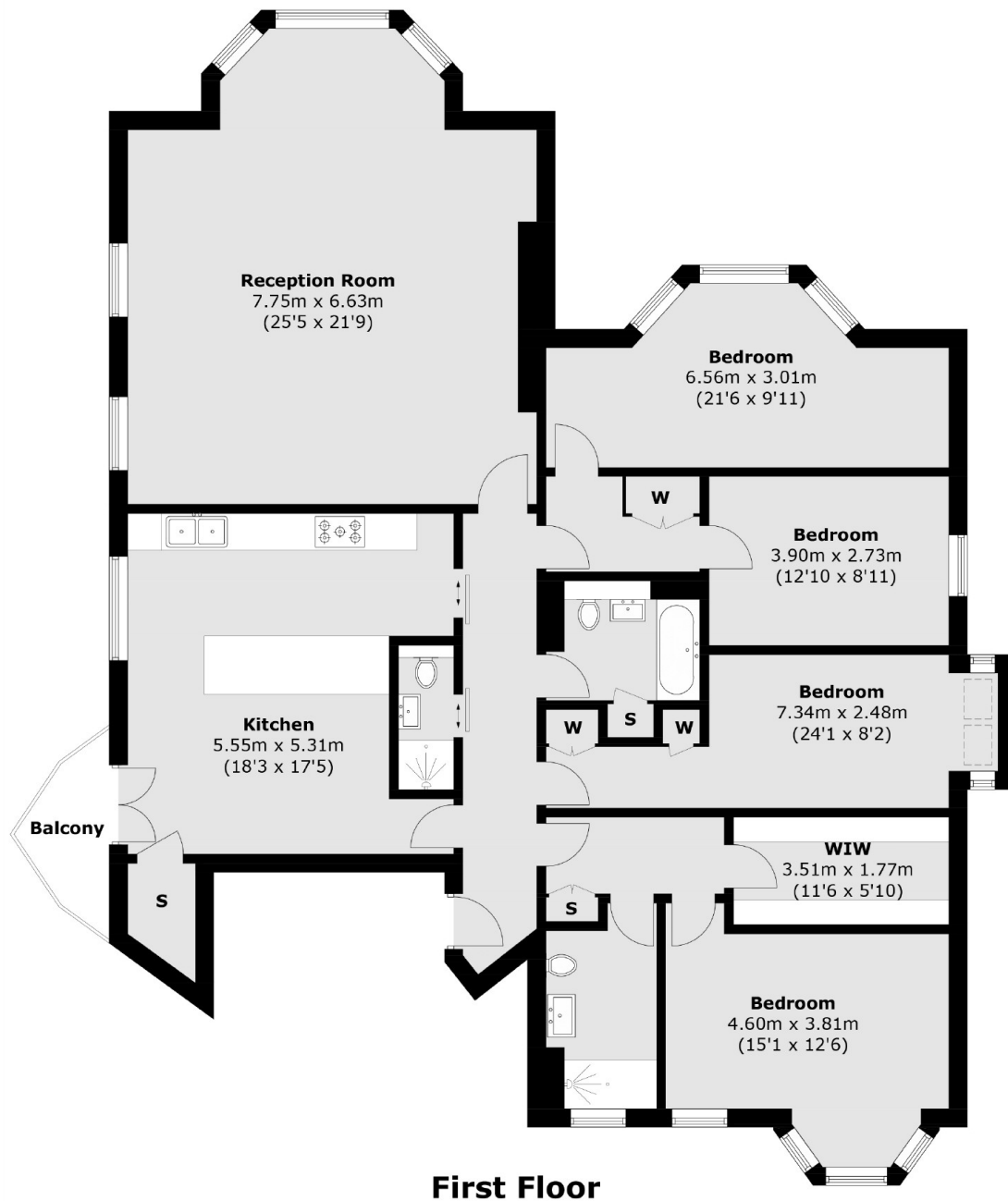
- Private Gated Apartment
- First Floor
- Four Bedroom
- Balcony
- Off Street Parking
- Interior Designed



Netherhall Gardens, NW3



Netherhall Gardens, London, NW3



Total area (approx.): 176.4 sq. m (1,898.7 sq. ft)
Balcony area: 3.1 sq. m (33.3 sq. ft)