



Tudor Close, NW3

£450 Per week

* VIDEO VIEWING AVAILABLE * Bright two double bedroom apartment on the first floor of a porter block in Belsize Park. Spacious reception room, separate kitchen, two double bedrooms with storage and family bathroom.

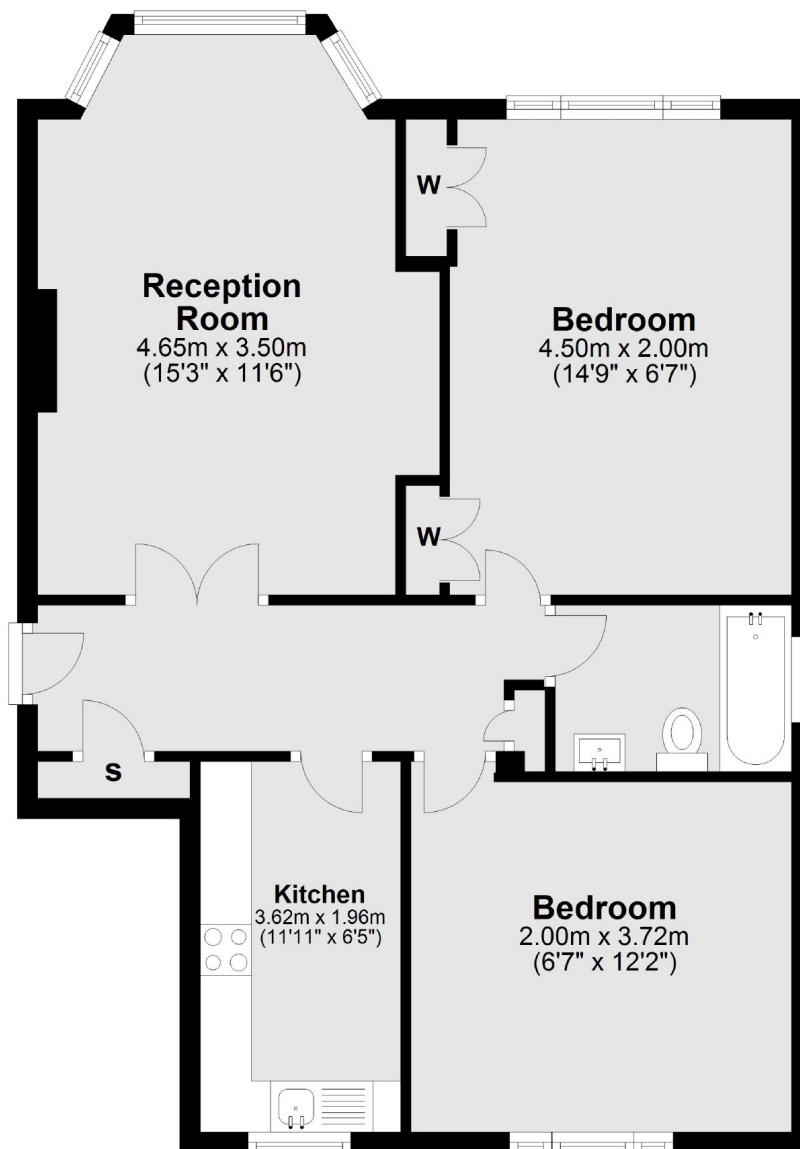
Tudor Close is located near to local shops and restaurants on Haverstock Hill and walking distance to Belsize Park underground station.

Features

Two Double Bedroom
First Floor Apartment
Porter
Communal Garden
Separate Kitchen
Good Storage

Tudor Close, London, NW3

First Floor



Total area: approx. 69.7 sq. metres (750.7 sq. feet)

Contact

To arrange a viewing call our office on the number below or visit our website.



Energy Rating: D. We aim to make our particulars both accurate and reliable. However they are not guaranteed; nor do they form part of an offer or contract. If you require clarification on any points then please contact us, especially if you're traveling some distance to view. Please note that appliances and heating systems have not been tested and therefore no warranties can be given as to their good working order.