



Belsize Avenue, NW3

£850,000

An exceptionally bright and spacious two bedroom, two bathroom apartment arranged over the fourth floor of this popular mansion block in the heart of Belsize Park. Large west facing windows allow a huge amount of light into the whole property and give amazing views out to the communal gardens and skyline of Belsize Park.

Hillfield Court is well positioned for easy access to the local shopping and restaurant facilities in nearby Belsize Village. The train stations at Belsize Park (Northern line, Zone 2) Hampstead Heath (Overground) and Swiss Cottage (Jubilee line, Zone 2) are all within 0.5 miles.

Features

- Two Double Bedrooms
- Porter and Lift
- Two Bathrooms
- Communal Gardens
- Great Transport Links
- First Come, First Served Parking

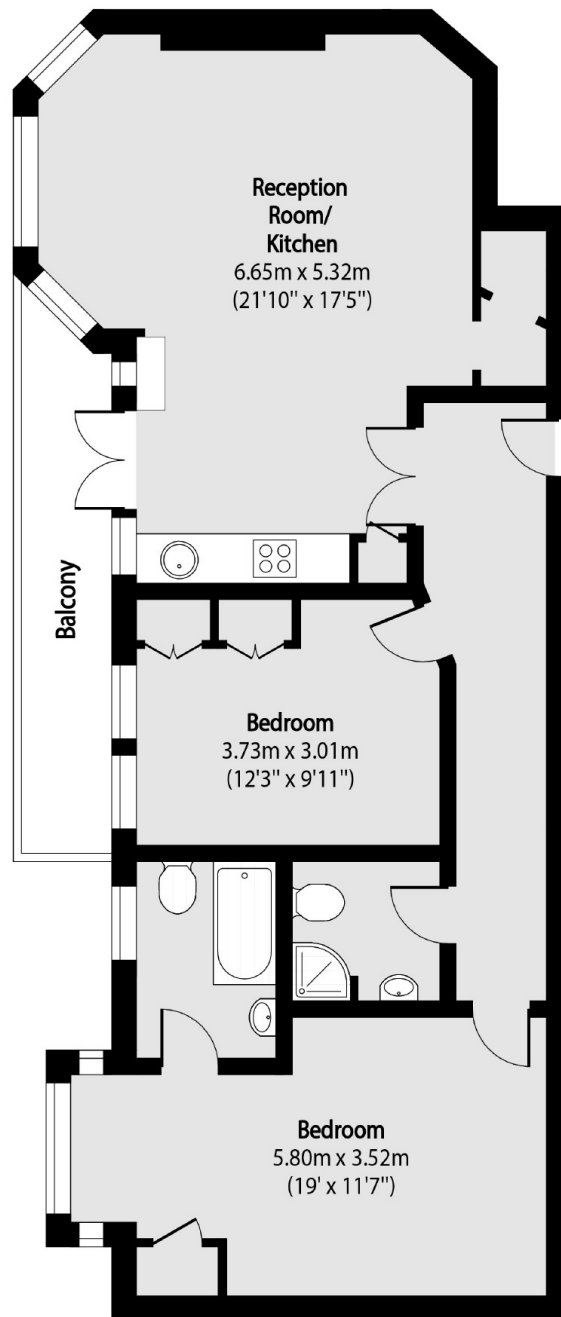


Belsize Avenue, NW3

The large open-plan, kitchen/reception is a great space to work with as a living area. The principal bedroom is very large with an en-suite bathroom, the second bedroom is alongside, also a very good double bedroom with a separate shower room next door.



Belsize Avenue,
London, NW3



Total area (approx): 79.96 sq m (861 sq. ft)

Balcony total area (approx): 7.09 sq m (76 sq. ft)

Dexters

Hampstead
56 Heath Street
London
NW3 1DL
Sales
020 7433 0273

Energy Rating: D. We aim to make our particulars both accurate and reliable. However they are not guaranteed; nor do they form part of an offer or contract. If you require clarification on any points then please contact us, especially if you're traveling some distance to view. Please note that appliances and heating systems have not been tested and therefore no warranties can be given as to their good working order.

 **RICS** | Regulated
Estate Agent
and Letting Agent

[dexters.co.uk](https://www.dexters.co.uk)