



Netherhall Gardens, NW3
£825,000

Dexters



Netherhall Gardens, NW3

This fantastic two double bedroom apartment is located on the top floor of this impressive Victorian semi-detached converted house. Recently renovated, the property is incredibly bright and spacious.

The principal bedroom is a large double with the modern bathroom alongside. The large separate reception and kitchen are all on this level with the second double bedroom down half a flight of stairs from the rest of the property.

Both bedrooms face the rear of the building and are quiet, with great views out over West London. The property is being sold chain-free with a brand new 999 year lease.

The pubs, cafés, restaurants, shops and Underground station (Northern Line) of Hampstead village are located 0.5 miles away. The property is situated 0.3 Miles from the O2 Centre amenities and 0.3 Miles from Finchley Road Underground station (Jubilee & Metropolitan Lines).

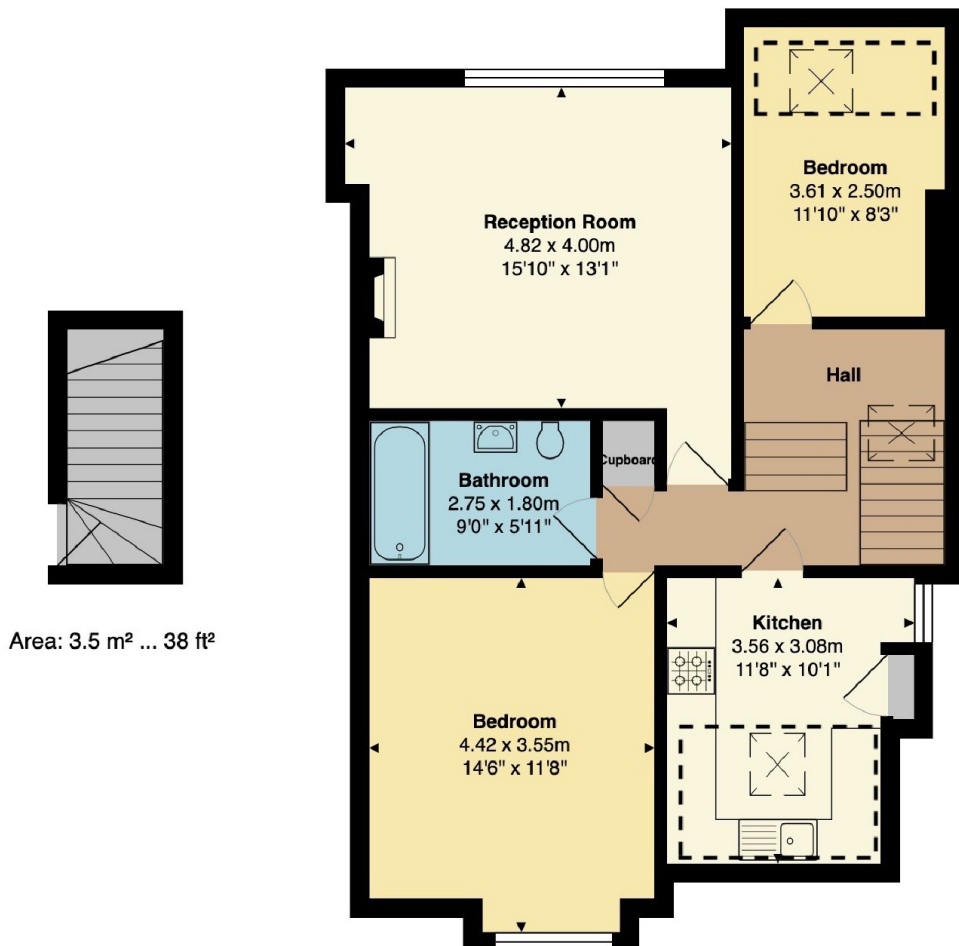
Features

- 2 Double Bedrooms
- New 999 Year Lease
- Top Floor
- Victorian Conversion
- Chain-Free
- Recently Renovated



Netherhall Gardens, London, NW3

Flat 4, 35 Netherall Gardens, London, NW3 5RL



Area: 75.5 m² ... 813 ft² (excludes restricted height)

Total Area: 79.0 m² ... 851 ft²

All measurements are approximate and for display purposes only

Dexters

Hampstead
56 Heath Street
London
NW3 1DL
Sales
020 7433 0273

Energy Rating: D. We aim to make our particulars both accurate and reliable. However they are not guaranteed; nor do they form part of an offer or contract. If you require clarification on any points then please contact us, especially if you're traveling some distance to view. Please note that appliances and heating systems have not been tested and therefore no warranties can be given as to their good working order.

 **RICS** | Regulated
Estate Agent
and Letting Agent

dexters.co.uk