



Belsize Park Gardens, NW3

£1,695,000

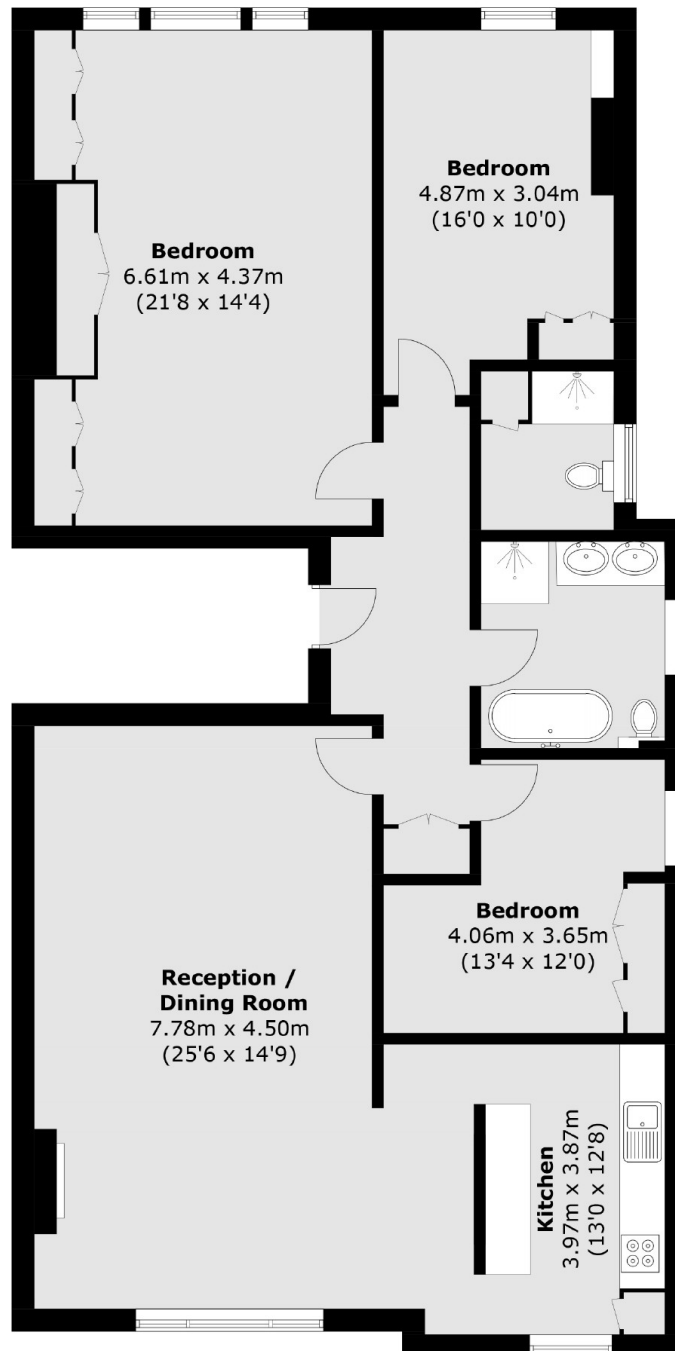
Occupying the second floor of an elegant end-of-terrace, semi-detached white stucco-fronted house is this beautifully presented three double bedroom apartment. The property has high ceilings, parquet wood flooring, two bathrooms, and a large 25' reception room ideal for entertaining. This impressive home combines space, light, and character in a sought-after setting.

This stunning period property is located on the corner of Lambolle Place, in the heart of Belsize Park, close to the shops, cafés and restaurants on England's Lane and Haverstock Hill and approximately 0.3 miles from Belsize Park Underground Station (Northern Line)

Features

- Excellent Condition
- Approximately 1400 Sq Ft
- Three Double Bedrooms
- Two Bathrooms
- Parquet Wood Flooring
- Close to Belsize Park tube

Belsize Park Gardens, London, NW3



Total area (approx.): 129.3 sq. m (1391.8 sq. ft)

Dexters

Hampstead
56 Heath Street
London
NW3 1DL
Sales
020 7433 0273

Energy Rating: D. We aim to make our particulars both accurate and reliable. However they are not guaranteed; nor do they form part of an offer or contract. If you require clarification on any points then please contact us, especially if you're traveling some distance to view. Please note that appliances and heating systems have not been tested and therefore no warranties can be given as to their good working order.

 **RICS** | Regulated
Estate Agent
and Letting Agent

[dexters.co.uk](https://www.dexters.co.uk)