



## Primrose Gardens, NW3

### £1,300,000

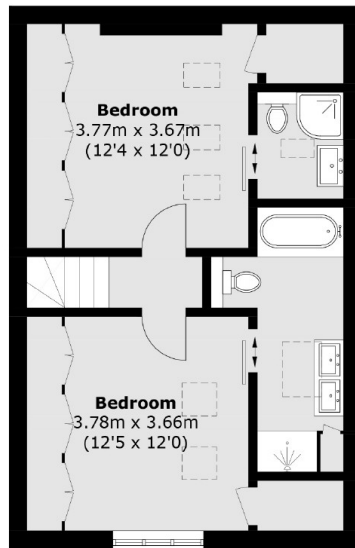
A charming semi-detached freehold house arranged over two floors. The property has two bedrooms, two bathrooms, and a spacious 29ft reception/dining room. Features off-street parking and a delightful patio garden.

Ideally located for the shops and cafes of Englands Lane and just a short walk from the open spaces of Primrose Hill Park. Both Swiss Cottage (Jubilee Line) and Belsize Park (Northern Line) underground stations are within easy reach.

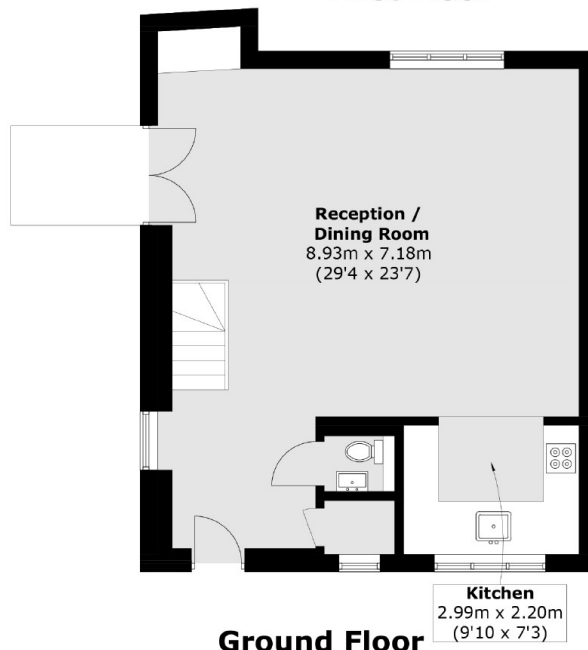
### Features

- Freehold
- Off Street Parking
- Two Story
- Chain Free
- Two Bedrooms
- Two Bathrooms

# Primrose Gardens, London, NW3



**First Floor**



**Ground Floor**

Total area (approx.): 107.7 sq. m (1,159.2 sq. ft)