



## Maresfield Gardens, NW3

£9,000 Per calendar month

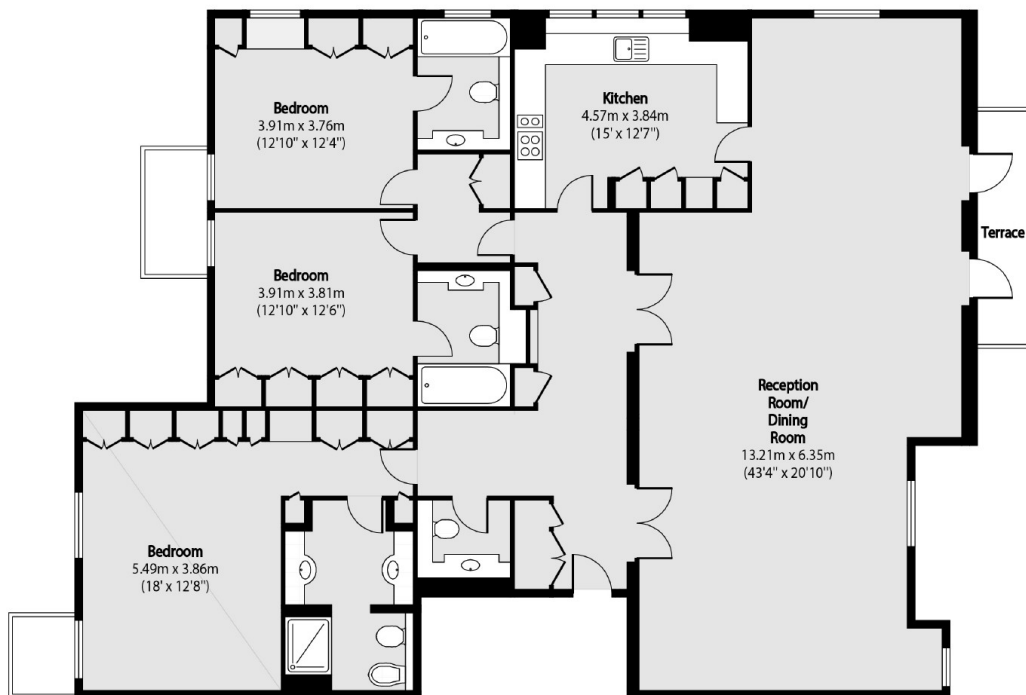
A stunning three-bedroom apartment offering an impressive 2,095 sq ft of lateral living space. This exceptional property boasts a range of unique features, including a dedicated parking space within a gated forecourt, three en-suite bedrooms plus a separate WC, extensive built-in storage throughout, and a recently renovated kitchen fitted with high-end Siemens appliances.

The property is ideally located in a quiet residential street within easy reach of Hampstead Village, Belsize Park and Swiss Cottage, with their multiple shopping and transport facilities and schools.

### Features

- Off-Street Parking
- Video Entry And Fob Access
- Natural Light Throughout
- Amazing Location
- Recently Renovated Kitchen
- Gated Property

# Maresfield Gardens, London, NW3



Total area (approx): 193.88 sq m (2087 sq. ft)

Terrace total area (approx): 4.9 sq m (53 sq. ft)

## Dexters

Hampstead  
56 Heath Street  
London  
NW3 1DL  
Lettings  
020 7433 0274

Energy Rating: C. We aim to make our particulars both accurate and reliable. However they are not guaranteed; nor do they form part of an offer or contract. If you require clarification on any points then please contact us, especially if you're traveling some distance to view. Please note that appliances and heating systems have not been tested and therefore no warranties can be given as to their good working order.

 **RICS** | Regulated  
Estate Agent  
and Letting Agent

[dexters.co.uk](https://www.dexters.co.uk)