



Hogarth Hill, NW11

£895,000

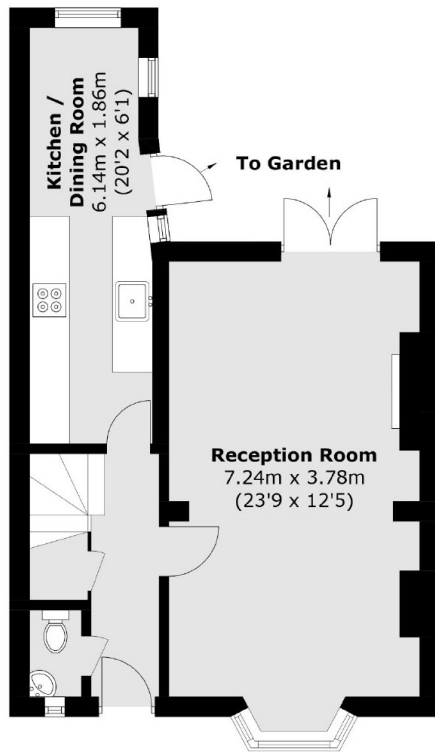
A charming and well presented three bedroom cottage designed by Parker & Unwin, and built 1910-1913, with many traditional features and a wonderful 110 ft rear garden.

Well located in the beautiful and immaculately preserved Hampstead Garden Suburb, within a short walk of Temple Fortune's shopping and transport facilities, and accessible for Golders Green underground station (Northern Line - Edgware branch) and Finchley Central underground station (Northern Line - High Barnet branch)

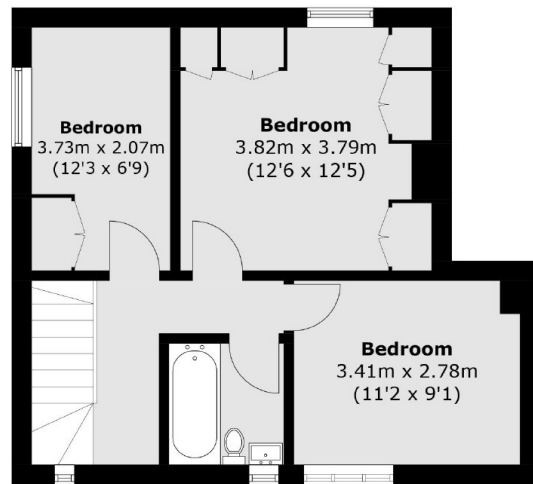
Features

Pretty Cottage
Three Bedrooms
Large South Facing Garden
Guest WC
Chain Free
Sole Agent

Hogarth Hill, London, NW11



Ground Floor



First Floor

Total area (approx.): 89.2 sq. m (960.1 sq. ft)