



## Fellows Road, NW3

£825,000

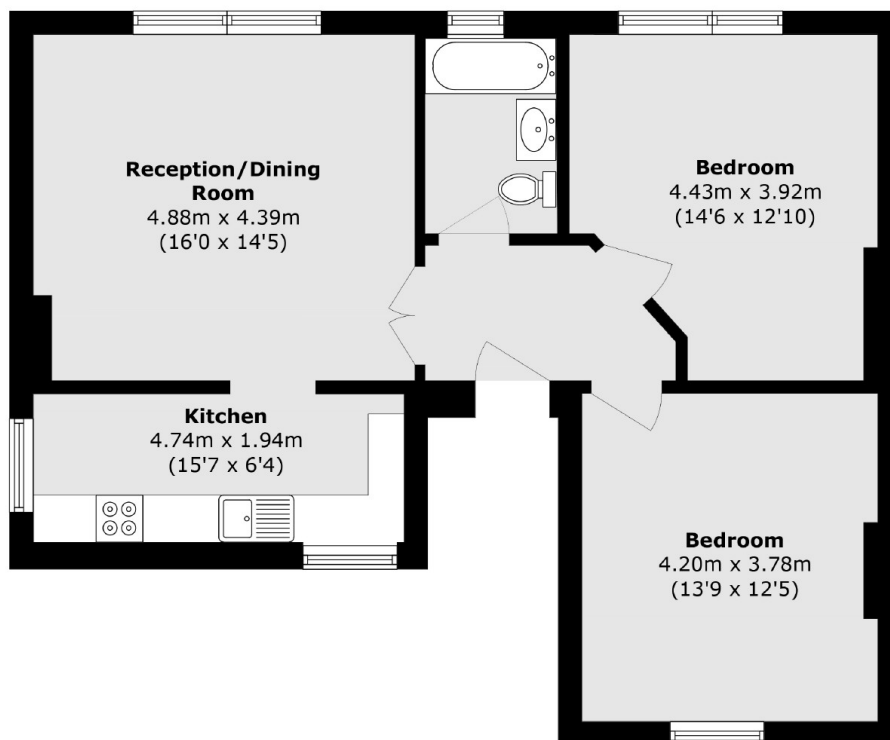
A spacious and well-proportioned first-floor, share of freehold apartment spanning 806 sq ft, located on the sought-after Fellows Road, NW3. Offering great potential, the property is in good condition but would benefit from modernisation

Ideally situated close to Swiss Cottage and Primrose Hill, it presents an excellent opportunity to create a stylish home in a prime location.

### Features

- Share of Freehold
- 2 Double Bedrooms
- First Floor
- Prime Location
- High Ceiling
- Very Bright

# Fellows Road, London, NW3



Total area (approx.): 74.9 sq. m (806.2 sq. ft)