



North End Road, NW11 £375,000

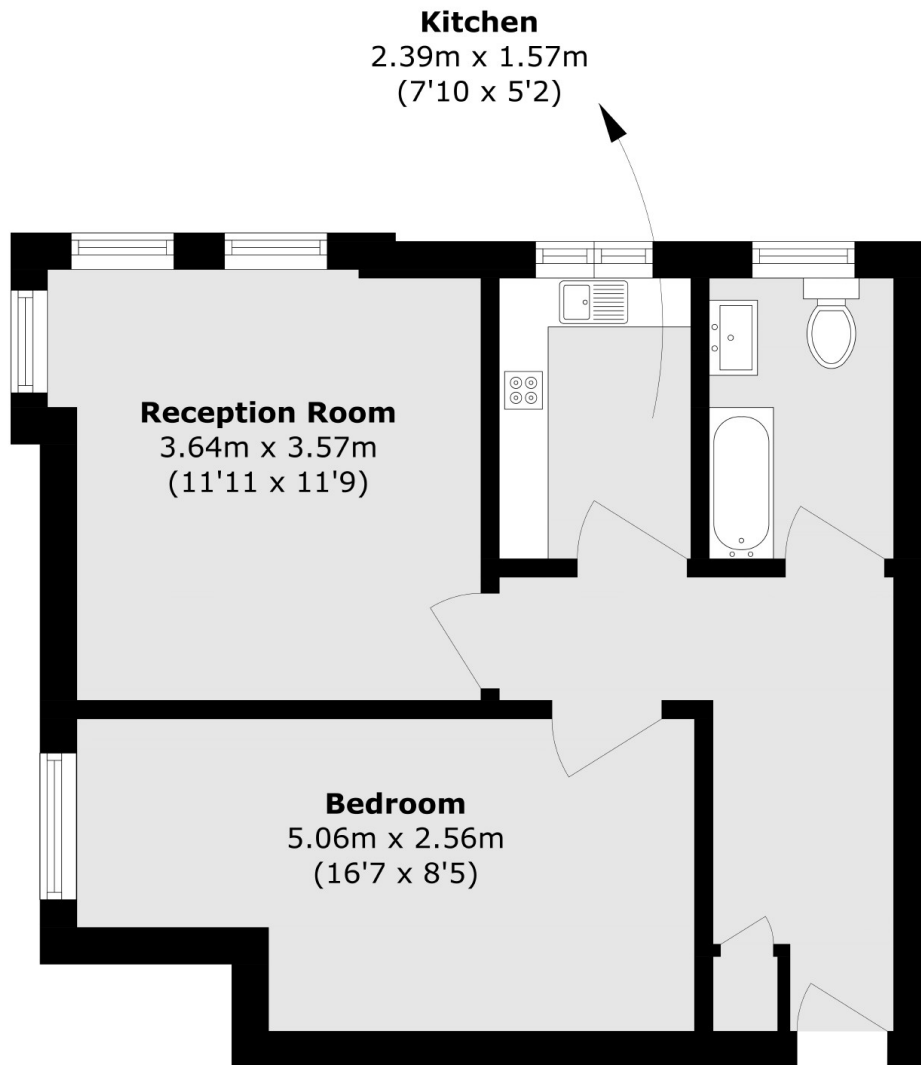
A one bedroom flat with communal gardens set on the ground floor of this highly regarded mansion block close to the multiple shops and transport services of Golders Green and Hampstead Heath.

The flat has been well maintained by the current owner and represents an ideal first time purchase or investment. It is very close to Golders Hill Park and Golders Green Underground station (Northern Line).

Features

- Reception Room
- Kitchen
- Double Bedroom
- Bathroom
- Close to Transport
- Communal Gardens

North End Road,
London, NW11



Total area (approx.): 40.3 sq. m (433.7 sq. ft)

Dexters

Hampstead
56 Heath Street
London
NW3 1DL
Sales
020 7433 0273

Energy Rating: D. We aim to make our particulars both accurate and reliable. However they are not guaranteed; nor do they form part of an offer or contract. If you require clarification on any points then please contact us, especially if you're traveling some distance to view. Please note that appliances and heating systems have not been tested and therefore no warranties can be given as to their good working order.

 **RICS** | Regulated
Estate Agent
and Letting Agent

[dexters.co.uk](https://www.dexters.co.uk)