

Bridge Way, NW11

£875,000

A newly built 4/5 bedroom townhouse in Temple Fortune, offering 1,917 sq ft of modern, light-filled living across four floors, with off-street parking and a private roof terrace. The home features an open-plan kitchen, multiple reception rooms, luxurious bathrooms, and a 10-year new-build guarantee. Virtual walk through available on request (link below).

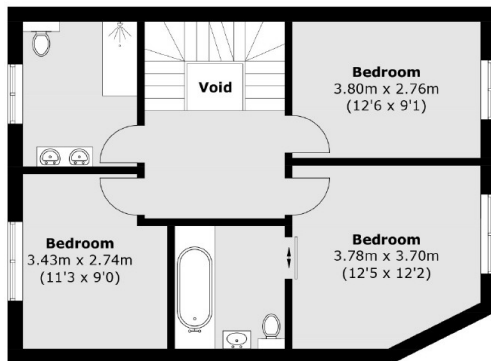
<https://my.matterport.com/show/?m=qaP3B7HRpyQ>

Bridge Way is ideally located for the shops, cafes and restaurants in Temple Fortune as well as the many bus routes on the Finchley Road with Golders Green Station 0.8 miles away.

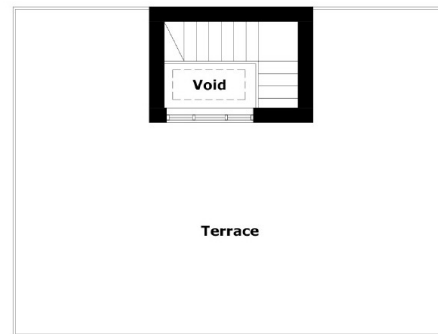
Features

Four/Five Bedrooms
Three Bathrooms
Freehold
Semi Detached
Off Street Parking
Roof Terrace

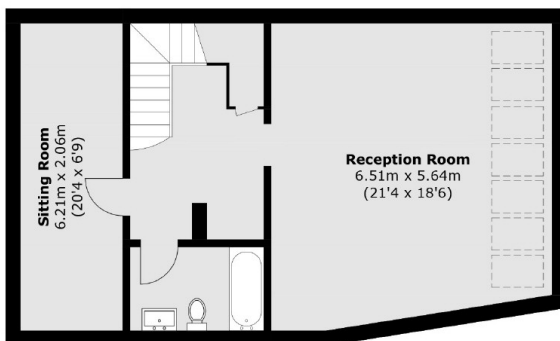
Bridge Way, London, NW11



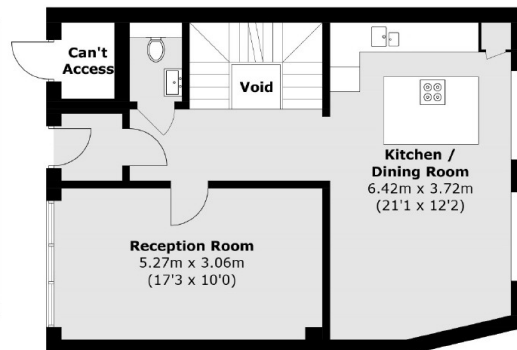
First Floor



Second Floor



Lower Ground Floor



Ground Floor

Total area (approx.): 185.4 sq. m (1,995.7 sq. ft)
Terrace: 49.5 sq. m (532.8 sq. ft)
(Excluding External Cupboard)