



Finchley Road, NW3

£1,300,000

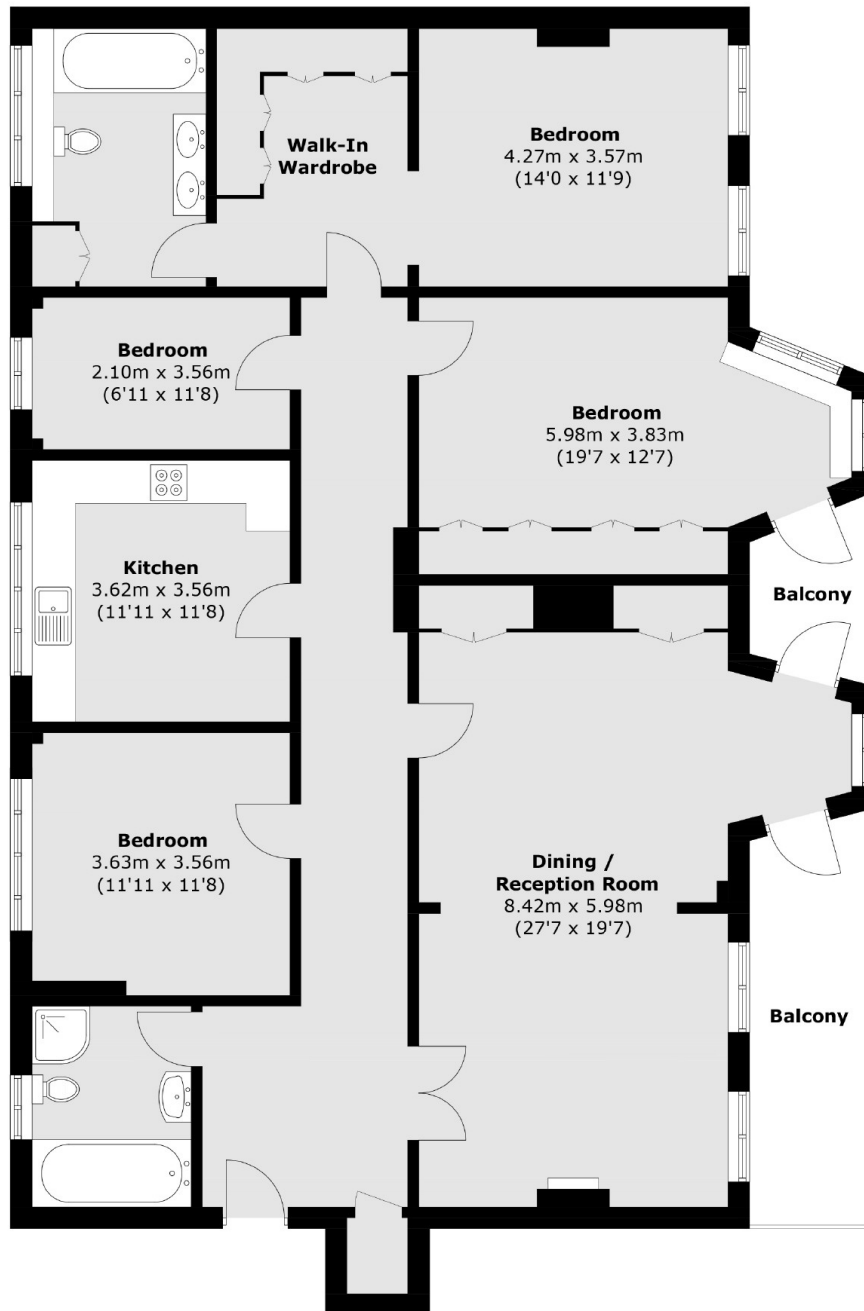
A spacious and well-maintained 1,768 square foot, four bedroom, two bathroom apartment featuring a separate kitchen and two private balconies. The property is bright and airy with fantastic living space and storage.

Palace Court is situated within easy reach from all the amenities on Finchley Road and the popular O2 centre. Hampstead High Street is also easily accessible.

Features

- Four Bedrooms
- Two Bathrooms
- Chain Free
- Very Spacious
- High Ceilings
- Two Balconies

Finchley Road,
London, NW3



Sixth Floor

Total area (approx.): 164.3 sq. m (1768.5 sq. ft)
Balcony: 12.8 sq. m (137.8 sq. ft)