



Rosecroft Avenue, NW3

£650,000

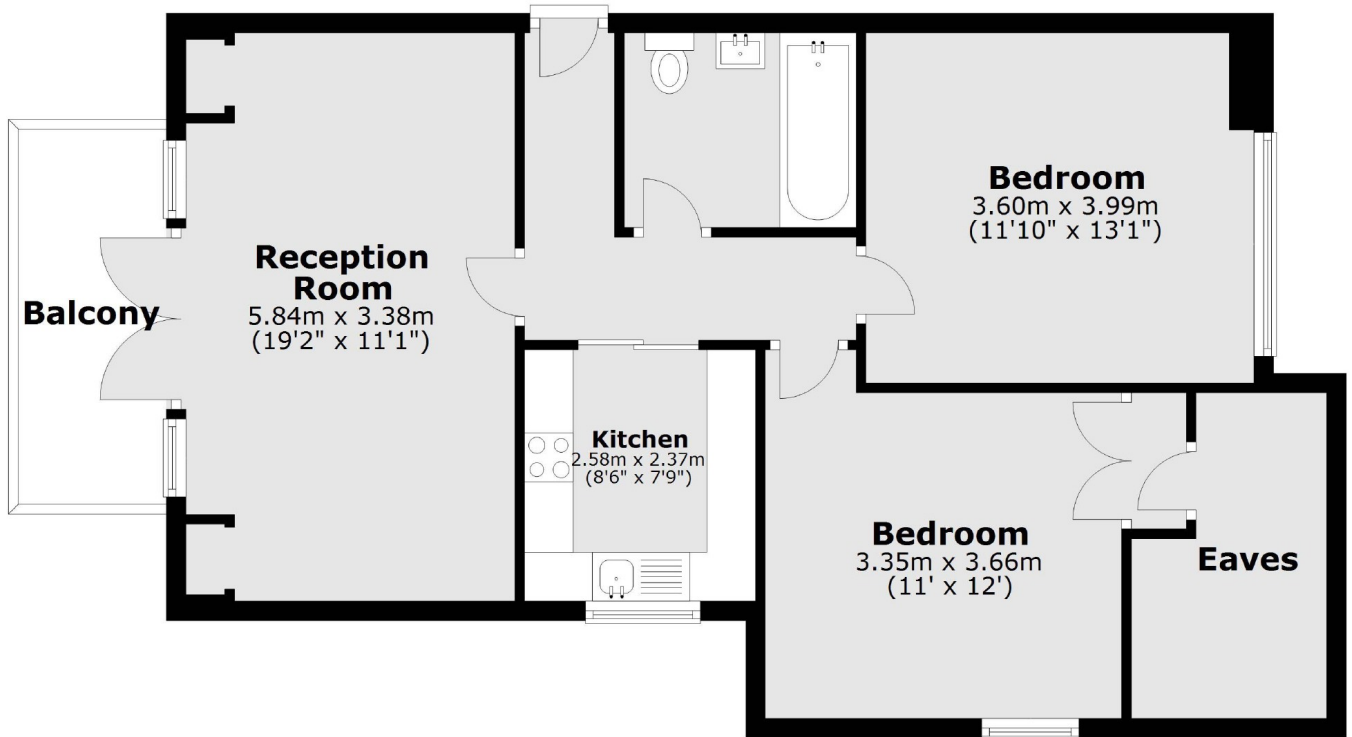
An excellent two bedroom flat with a large balcony, set in this well run building and located on a particularly sought after and quiet tree lined street in Hampstead.

Rosecroft Avenue is an especially well regarded residential street in the popular "Crofts" area of Hampstead and is within easy access to Hampstead Heath and the multiple transport facilities along Finchley Road.

Features

- Reception Room
- Separate Kitchen
- Two Double Bedrooms
- Private Balcony
- Extensive Storage
- Share of Freehold

Rosecroft Avenue, London, NW3



Main area: Approx. 66.4 sq. metres (715.2 sq. feet)
Plus balconies, approx. 6.3 sq. metres (67.3 sq. feet)

Dexters

Hampstead
56 Heath Street
London
NW3 1DL
Sales
020 7433 0273

Energy Rating: D. We aim to make our particulars both accurate and reliable. However they are not guaranteed; nor do they form part of an offer or contract. If you require clarification on any points then please contact us, especially if you're traveling some distance to view. Please note that appliances and heating systems have not been tested and therefore no warranties can be given as to their good working order.

 **RICS** | Regulated
Estate Agent
and Letting Agent

[dexters.co.uk](https://www.dexters.co.uk)