



Hermitage Lane, NW2

£795,000

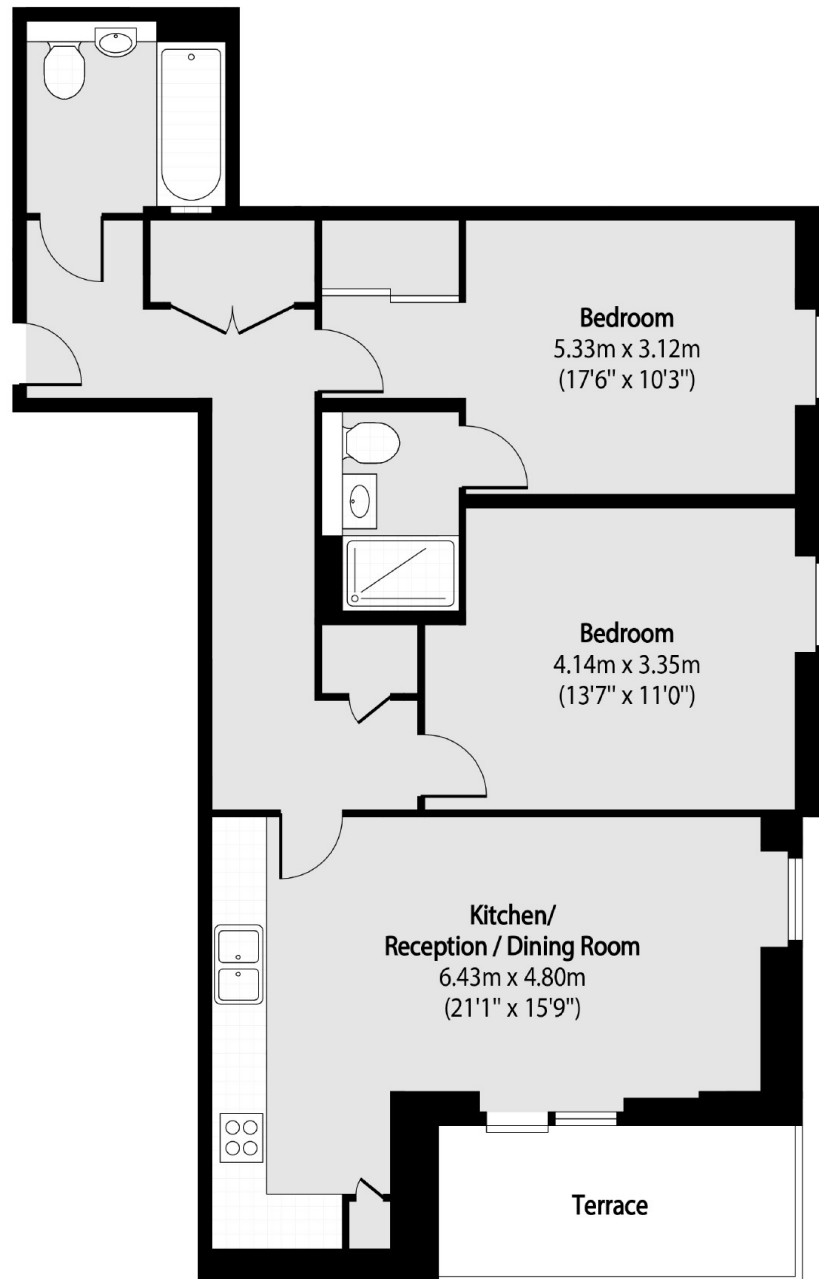
An exceptional two double-bedroom lateral apartment (807 sq ft / 76 sqm) with a private balcony, located on the second floor of a striking, brand-new purpose-built block with lift access. Finished to a high specification with underfloor heating throughout and gated parking.

Located on this ever popular Hampstead road close to both the open spaces of West Heath and the convenience shopping and public transport amenities. Transport links include Cricklewood (Thameslink, 0.8 miles) and Golders Green (Northern Line, 0.8 miles).

Features

Approximately 807 Sq.Ft
Two Double Bedrooms
Open Plan Kitchen / Living
Newly Build
Two Bathrooms
Gated Parking

Hermitage Lane,
London, NW2



Total area (approx): 74.97 sq m (807 sq. ft)

Terrace total area (approx): 6.59 sq m (71 sq. ft)

Dexters

Hampstead
56 Heath Street
London
NW3 1DL
Sales
020 7433 0273

Energy Rating: B. We aim to make our particulars both accurate and reliable. However they are not guaranteed; nor do they form part of an offer or contract. If you require clarification on any points then please contact us, especially if you're traveling some distance to view. Please note that appliances and heating systems have not been tested and therefore no warranties can be given as to their good working order.

 **RICS** | Regulated
Estate Agent
and Letting Agent

[dexters.co.uk](https://www.dexters.co.uk)