



Constantine Road, NW3

£800,000

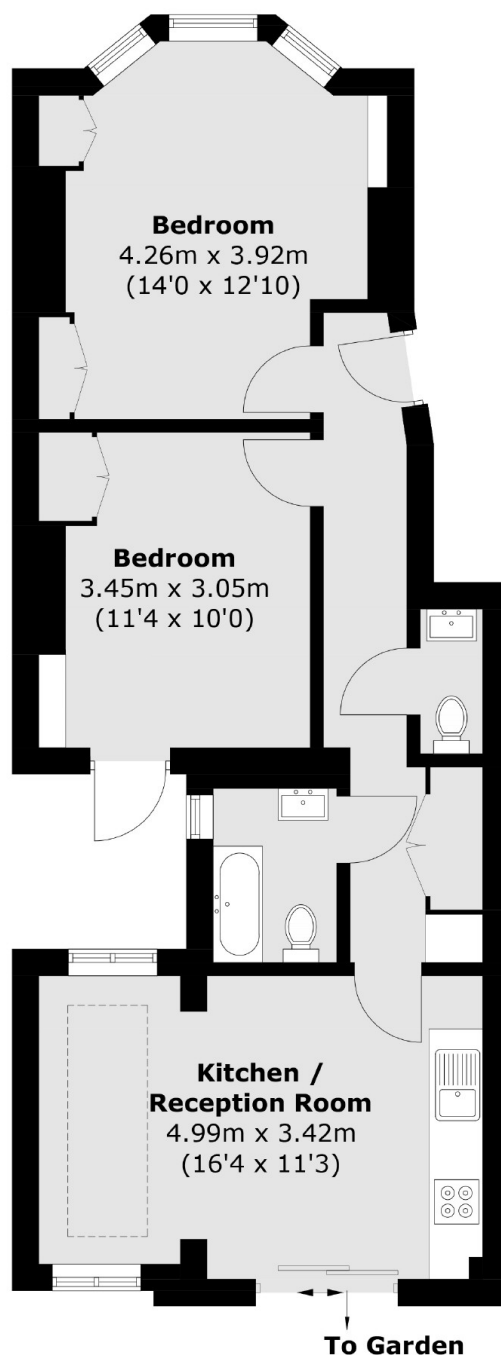
A beautifully refurbished two bedroom, one bathroom flat with an additional WC, situated on the raised ground floor of a charming Victorian conversion.

South End Green offers charming cafes, shops, and a village vibe. Belsize Park and Hampstead Village are both within easy reach. Hampstead Heath Overground Station is only 0.1 miles from the property and Belsize Park (Zone 2 Northern Line) tube station is also just 0.4 miles away.

Features

- Two Bedrooms
- One Bathroom
- Additional WC
- Share of Freehold
- Private Garden
- Chain free

Constantine Road, London, NW3



Total area (approx.): 57.3 sq. m (616.7 sq. ft)

Dexters

Hampstead
56 Heath Street
London
NW3 1DL
Sales
020 7433 0273

Energy Rating: D. We aim to make our particulars both accurate and reliable. However they are not guaranteed; nor do they form part of an offer or contract. If you require clarification on any points then please contact us, especially if you're traveling some distance to view. Please note that appliances and heating systems have not been tested and therefore no warranties can be given as to their good working order.

 **RICS** | Regulated
Estate Agent
and Letting Agent

[dexters.co.uk](https://www.dexters.co.uk)